



PSN

College of Engineering and Technology
An Autonomous Institution, Affiliated to Anna University
Approved by AICTE, Accredited by NAAC with A+ Grade

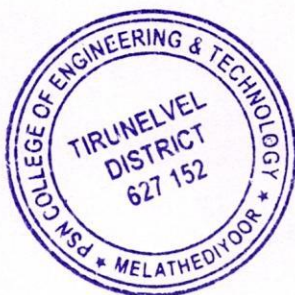
CRITERION- 7

Key Indicator - 7.1 Institutional Values and Social Responsibilities

Metric No- 7.1.5

Environmental Consciousness and Sustainability

**Name - The institutional initiatives for greening
the campus**

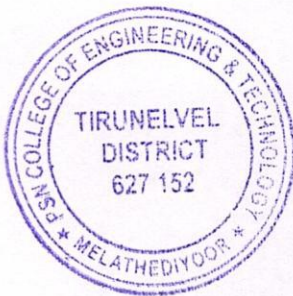



PRINCIPAL
PSN COLLEGE OF ENGINEERING & TECHNOLOGY
MELATHEDIYOOR, PALAYAMKOTTAI TALUK
TIRUNELVELI DIST. - 627 152.



PSN College of Engineering and Technology
An Autonomous Institution, Affiliated to Anna University
Approved by AICTE, Accredited by NAAC with A+ Grade

GREEN CAMPUS INTIATIVES

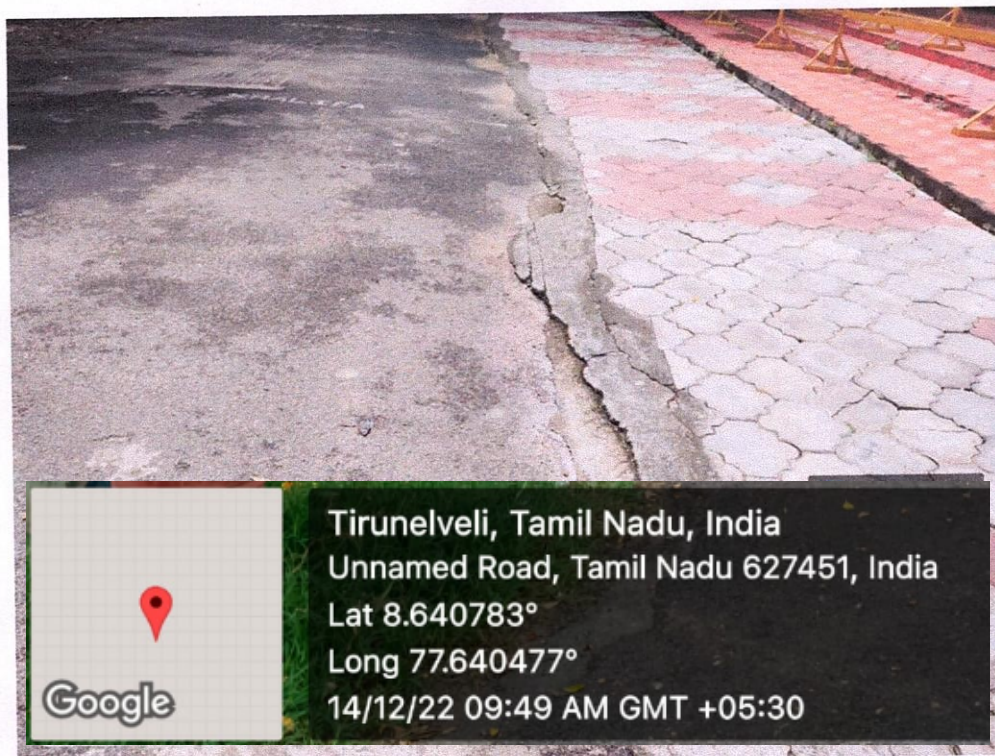


PRINCIPAL
PSN COLLEGE OF ENGINEERING & TECHNOLOGY
MELATHEDIYOOR, PALAYAMKOTTAI TALUK
TIRUNELVELI DIST. - 627 152.



PSN College of Engineering and Technology
An Autonomous Institution, Affiliated to Anna University
Approved by AICTE, Accredited by NAAC with A+ Grade

3. Pedestrian Friendly pathways



PEDESTRIAN PATHWAY BEFORE THE LIBRARY

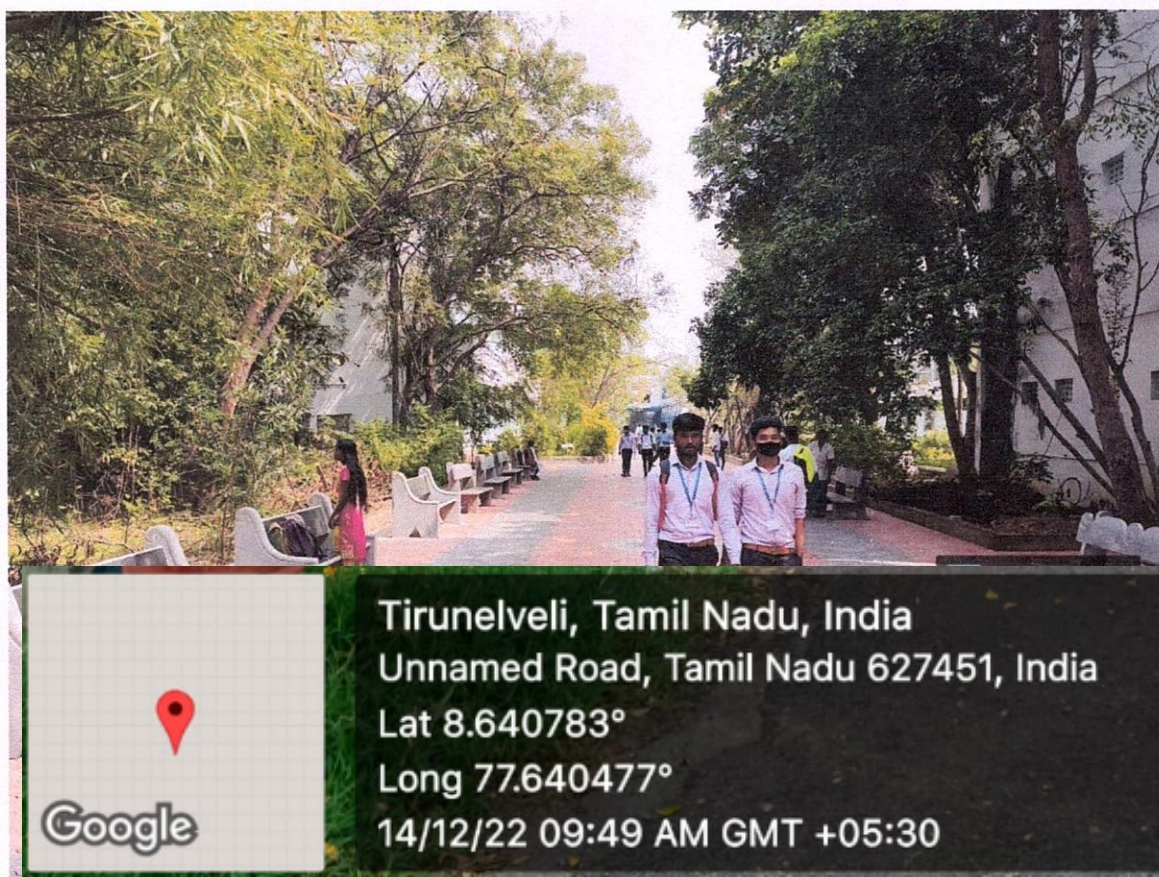


PRINCIPAL
PSN COLLEGE OF ENGINEERING & TECHNOLOGY
MELATHEDIYOOR, PALAYAMKOTTAI TALUK
TIRUNELVELI DIST. - 627 152.

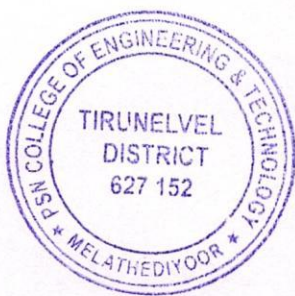


PSN College of Engineering and Technology
An Autonomous Institution, Affiliated to Anna University
Approved by AICTE, Accredited by NAAC with A+ Grade

3. Pedestrian Friendly pathways



PEDESTRIAN PATHWAY OPPOSITE TO THE FIRST YEAR BLOCK



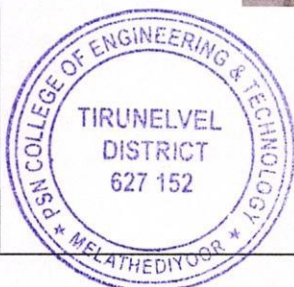
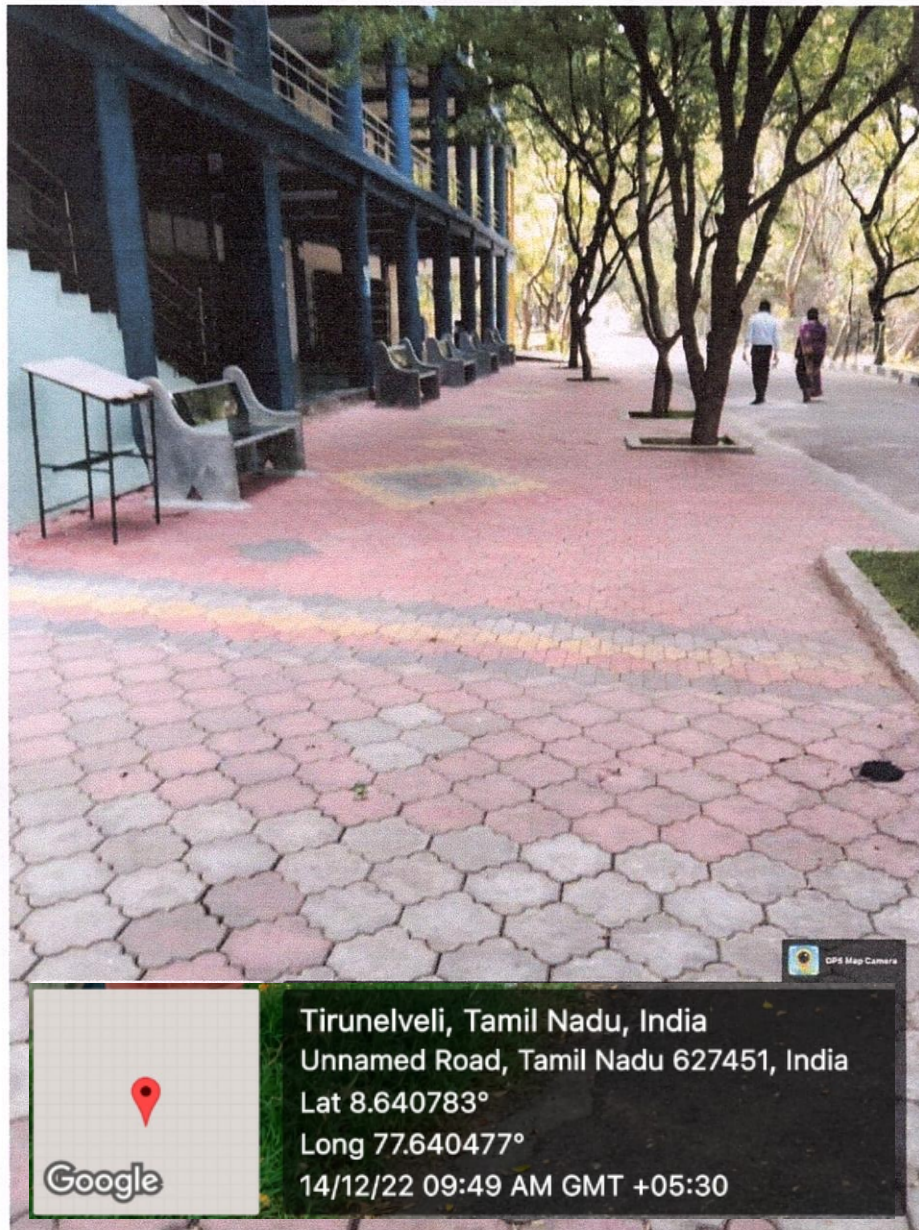
PRINCIPAL

PSN COLLEGE OF ENGINEERING & TECHNOLOGY
MELATHEDIYOORA, PALAYAMKOTTAI TALUK
TIRUNELVELI DIST. - 627 152.



PSN College of Engineering and Technology
An Autonomous Institution, Affiliated to Anna University
Approved by AICTE, Accredited by NAAC with A+ Grade

3. Pedestrian Friendly pathways



PEDESTRIAN PATHWAY NEAR BY IT BLOCK



PRINCIPAL
PSN COLLEGE OF ENGINEERING & TECHNOLOGY
MELATHEDIYOOR, PALAYAMKOTTAI TALUK
TIRUNELVELI DIST. - 627 152.