

# PSN College of Engineering and Technology (Autonomous)



Melathediyoor, Tirunelveli - 627 152, Tamilnadu  
Approved by AICTE and Affiliated to Anna University  
Accredited by NAAC and Recognised by UGC under section 2(f) and 12(B)  
An ISO 9001 : 2015 Certified Institution



Website: [www.psncet.ac.in](http://www.psncet.ac.in)  
Phone: 04634 279009, 04634 279680.

E-Mail: [principal@psncet.ac.in](mailto:principal@psncet.ac.in)

## Feedback on Curriculum: Analysis

Department	Link to Document
Aeronautical Engineering	<a href="#">View Document</a>
Civil Engineering	<a href="#">View Document</a>
Computer Science and Engineering	<a href="#">View Document</a>
Electronics and Communication Engineering	<a href="#">View Document</a>
Electrical and Electronics Engineering	<a href="#">View Document</a>
Electronics and Instrumentation Engineering	<a href="#">View Document</a>
Marine Engineering	<a href="#">View Document</a>
Mechanical and Automation Engineering	<a href="#">View Document</a>
Mechanical Engineering	<a href="#">View Document</a>
Business Administration	<a href="#">View Document</a>

# PSN College of Engineering and Technology (Autonomous)



Melathediyoor, Tirunelveli - 627 152, Tamilnadu  
 Approved by AICTE and Affiliated to Anna University  
 Accredited by NAAC and Recognised by UGC under section 2(f) and 12(B)  
 An ISO 9001 : 2015 Certified Institution



Website: www.psnacet.ac.in  
 Phone: 04634 279009, 04634 279680.

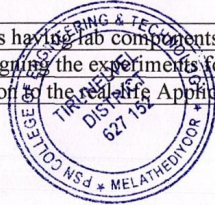
E-Mail: principal@psnacet.ac.in

## Feed Back Analysis Report

(Data provided are in percentage)

Name of the Department: Aeronautical Engineering

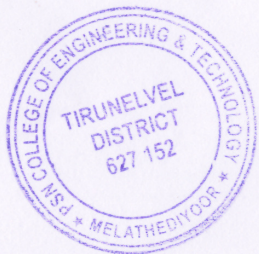
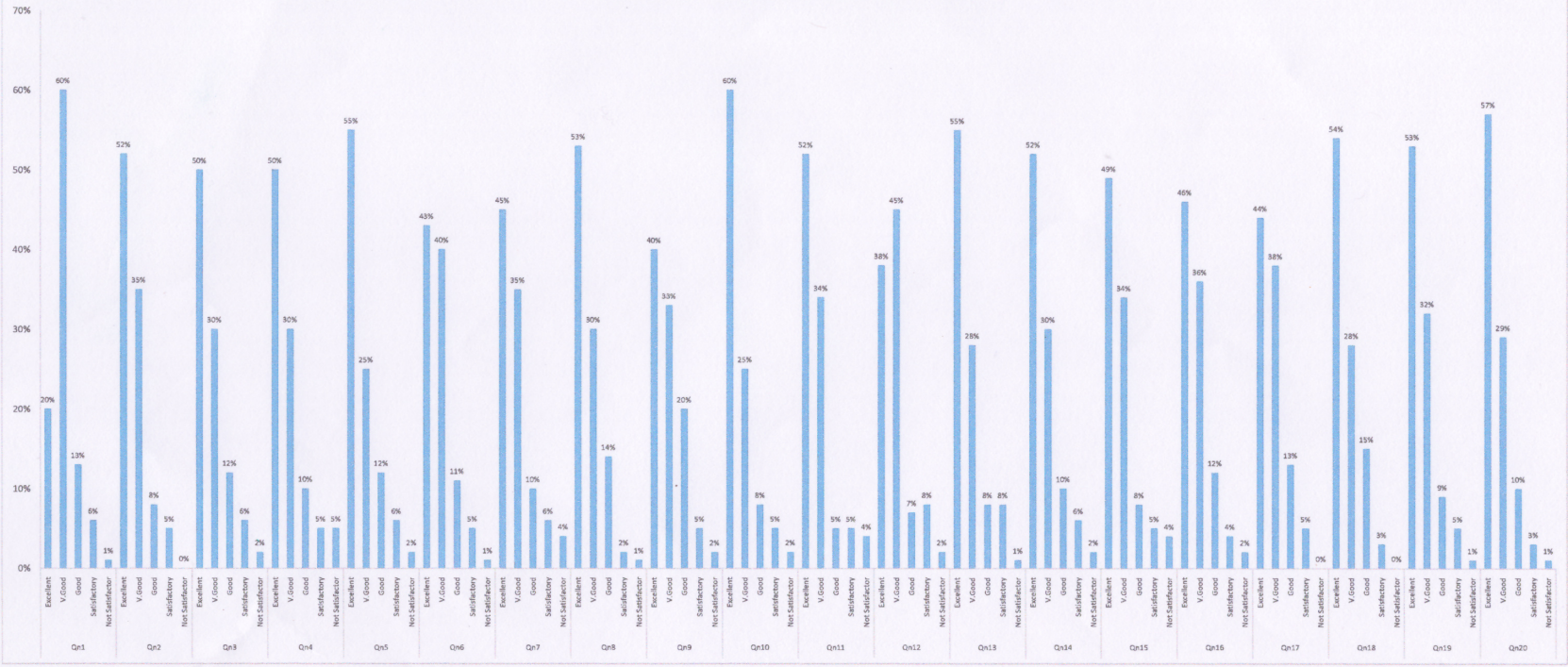
Qn. No.	Question	Excel.	V. Good	Good	Satis.	Not Satis.
1	How do you rate the sequence of the courses that you have studied are in sequence to what you have studied in the previous semester?	20	60	13	6	1
2	How do you rate the syllabus of the courses that you have studied in relation to the competencies expected out of the course?	52	35	8	5	0
3	How do you rate the relevance of the units in syllabus relevant to the course?	50	30	12	6	2
4	How do you rate the sequence of the units in the course?	50	30	10	5	5
5	How do you rate the allocation of the credits to the courses?	55	25	12	6	2
6	How do you rate the distribution of the contact hours among the course components (L-T-P)?	43	40	11	5	1
7	How do you rate the offering of the electives in terms of their relevance to the specialization streams?	45	35	10	6	4
8	How do you rate the electives offered in relation to the Technological advancements?	53	30	14	2	1
9	How do you rate the relevance of the text books and reference books by their international recognition to the courses?	40	33	20	5	2
10	Rate the size of syllabus in terms of the load on the student	60	25	8	5	2
11	Rate the courses in terms of extra learning or self-learning considering the design of the courses	52	34	5	5	4
12	Rate the courses in terms of sequence of offering considering whether the preceding courses have been covered.	38	45	7	8	2
13	How do you rate the loading of the courses in a semester?	55	28	8	8	1
14	How do you rate the evaluation scheme designed for each of the course?	52	30	10	6	2
15	How do you rate the objectives stated for each of the course?	49	35	8	5	4
16	How do you rate competencies expected out of the course?	46	36	12	4	2
17	How do you rate the composition of the courses in terms of basic science, engineering science, humanities, discipline core, discipline elective, open elective, project etc.?	44	38	13	5	0
18	How do you rate the percentage of courses having lab components?	54	28	15	3	0
19	How do you rate the domain used for designing the experiments for the lab components?	53	32	9	5	1
20	How do you rate the experiments in relation to the real life Applications?	57	29	10	3	1



*Handwritten initials*

**PRINCIPAL**  
 PSN COLLEGE OF ENGINEERING & TECHNOLOGY  
 MELATHEDIYOOR, PALAYAMKOTTAI TALUK  
 TIRUNELVELI DIST. - 627 152.

**STAKEHOLDER FEEDBACK ON CURRICULUM & TEACHING-LEARNING ANALYSIS**  
**Academic Year 2017-18**  
**DEPARTMENT OF AERONAUTICAL ENGINEERING**



*Handwritten signature in green ink.*

**PRINCIPAL**  
**PSN COLLEGE OF ENGINEERING & TECHNOLOGY**  
**MELATHEDIYOOR, PALAYAMKOTTAI TALUK**  
**TIRUNELVELI DIST 627 152**

# PSN College of Engineering and Technology (Autonomous)



Melathediyoor, Tirunelveli - 627 152, Tamilnadu  
 Approved by AICTE and Affiliated to Anna University  
 Accredited by NAAC and Recognised by UGC under section 2(f) and 12(B)  
 An ISO 9001 : 2015 Certified Institution



Website: www.psnacet.ac.in  
 Phone: 04634 279009, 04634 279680.

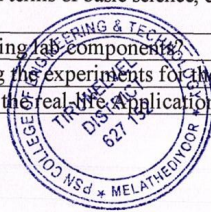
E-Mail: principal@psnacet.ac.in

## Feedback Analysis Report

(Data provided are in percentage)

Name of the Department: Civil Engineering

Qn. No.	Question	Excel.	V. Good	Good	Satis.	Not Satis.
1	How do you rate the sequence of the courses that you have studied are in sequence to what you have studied in the previous semester?	60	40	0	0	0
2	How do you rate the syllabus of the courses that you have studied in relation to the competencies expected out of the course?	50	48	2	0	0
3	How do you rate the relevance of the units in syllabus relevant to the course?	65	30	5	0	0
4	How do you rate the sequence of the units in the course?	65	30	5	0	0
5	How do you rate the allocation of the credits to the courses?	52	38	10	0	0
6	How do you rate the distribution of the contact hours among the course components (L-T-P)?	42	58	0	0	0
7	How do you rate the offering of the electives in terms of their relevance to the specialization streams?	60	30	10	0	0
8	How do you rate the electives offered in relation to the Technological advancements?	54	36	5	5	0
9	How do you rate the relevance of the text books and reference books by their international recognition to the courses?	56	28	10	6	0
10	Rate the size of syllabus in terms of the load on the student	65	30	5	0	0
11	Rate the courses in terms of extra learning or self-learning considering the design of the courses	40	40	15	5	0
12	Rate the courses in terms of sequence of offering considering whether the preceding courses have been covered.	60	20	10	5	5
13	How do you rate the loading of the courses in a semester?	40	45	10	5	0
14	How do you rate the evaluation scheme designed for each of the course?	60	40	0	0	0
15	How do you rate the objectives stated for each of the course?	42	40	10	8	0
16	How do you rate competencies expected out of the course?	65	30	0	5	0
17	How do you rate the composition of the courses in terms of basic science, engineering science, humanities, discipline core, discipline elective, open elective, project etc.?	56	29	10	5	0
18	How do you rate the percentage of courses having lab components?	60	25	10	5	0
19	How do you rate the domain used for designing the experiments for the lab components?	40	40	10	5	5
20	How do you rate the experiments in relation to the real-life applications?	55	25	15	5	0



*h.p.s.*  
**PRINCIPAL**  
 PSN COLLEGE OF ENGINEERING & TECHNOLOGY  
 MELATHEDIYOOR, PALAYAMKOTTAI TALUK  
 TIRUNELVELI DIST. - 627 152.



# PSN COLLEGE OF ENGINEERING AND TECHNOLOGY

(An Autonomous Institution Affiliated to Anna University, Chennai)

Approved by AICTE and Recognized by UGC under section 2 (f), 12 (B)

An ISO 9001:2015 Certified Institution

Accredited By NAAC

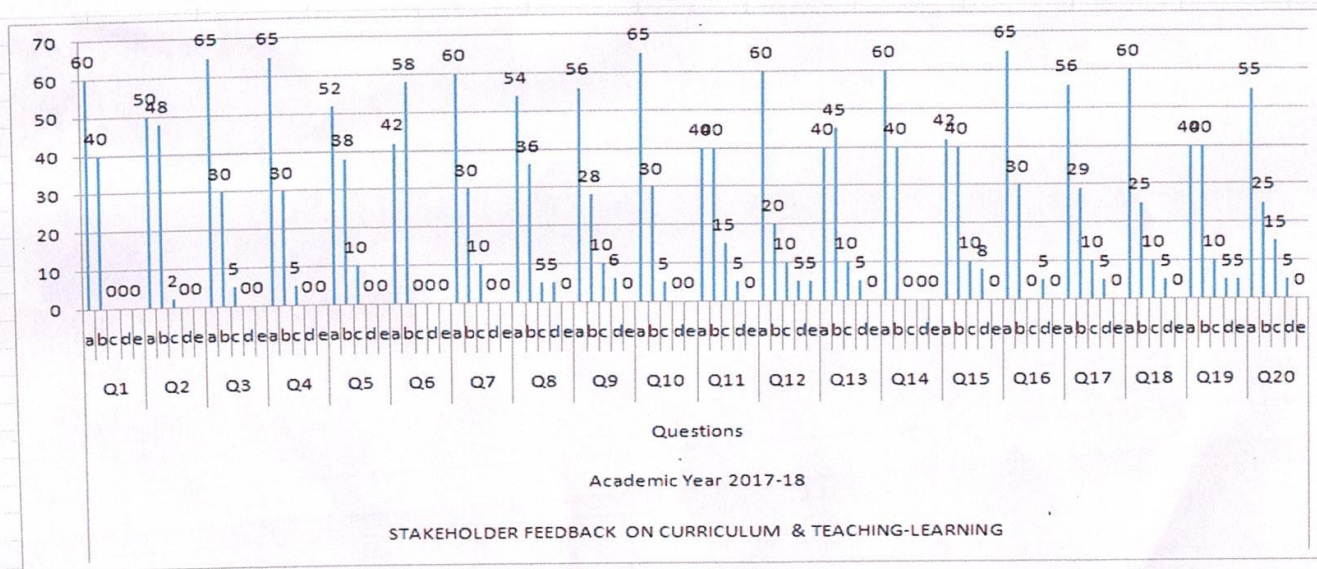
Melathediyoor, Palayamkottai, Tirunelveli – 627 152

## DEPARTMENT OF CIVIL ENGINEERING



Date: 25.04.2018

### Stakeholder Feedback on Curriculum & Teaching – Learning Analysis Academic Year 2017 – 2018



*[Handwritten Signature]*

PRINCIPAL

PSN COLLEGE OF ENGINEERING & TECHNOLOGY  
MELATHEDIYOOR, PALAYAMKOTTAI TALUK  
TIRUNELVELI DIST. - 627 152.



*[Handwritten Signature]*  
Head of the Department / Civil

HEAD OF THE DEPARTMENT  
DEPARTMENT OF CIVIL ENGINEERING  
PSN COLLEGE OF ENGG & TECH  
MELATHEDIYOOR - 627 152

# PSN College of Engineering and Technology (Autonomous)



Melathediyoor, Tirunelveli - 627 152, Tamilnadu  
 Approved by AICTE and Affiliated to Anna University  
 Accredited by NAAC and Recognised by UGC under section 2(f) and 12(B)  
 An ISO 9001 : 2015 Certified Institution



Website: www.psnecet.ac.in  
 Phone: 04634 279009, 04634 279680.

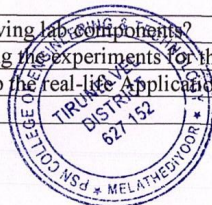
E-Mail: principal@psnecet.ac.in

## Feedback Analysis Report

(Data provided are in percentage)

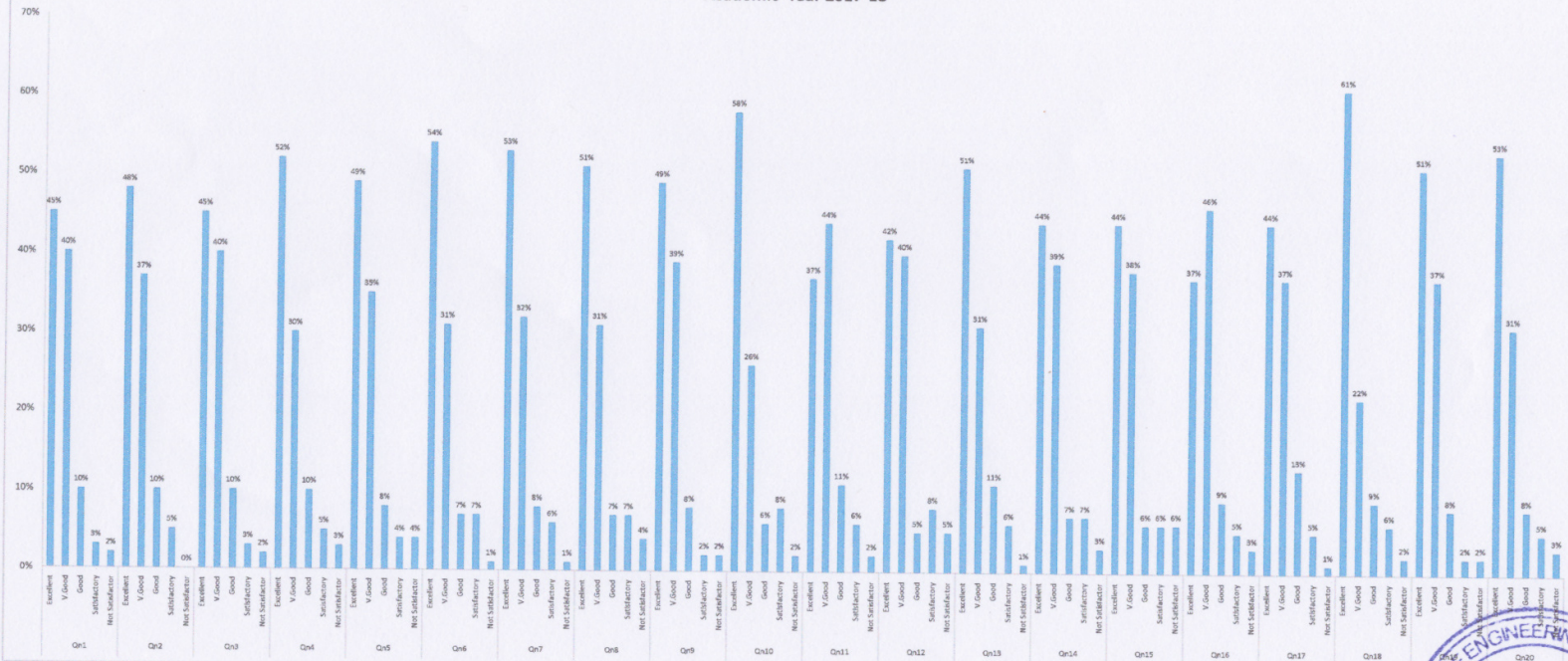
Name of the Department: Computer Science and Engineering

Qn. No.	Question	Excel.	V. Good	Good	Satis.	Not Satis.
1	How do you rate the sequence of the courses that you have studied are in sequence to what you have studied in the previous semester?	45	40	10	3	2
2	How do you rate the syllabus of the courses that you have studied in relation to the competencies expected out of the course?	48	37	10	5	0
3	How do you rate the relevance of the units in syllabus relevant to the course?	45	40	10	3	2
4	How do you rate the sequence of the units in the course?	52	30	10	5	3
5	How do you rate the allocation of the credits to the courses?	49	35	8	4	4
6	How do you rate the distribution of the contact hours among the course components (L-T-P)?	54	31	7	7	1
7	How do you rate the offering of the electives in terms of their relevance to the specialization streams?	53	32	8	6	1
8	How do you rate the electives offered in relation to the Technological advancements?	51	31	7	7	4
9	How do you rate the relevance of the text books and reference books by their international recognition to the courses?	49	39	8	2	2
10	Rate the size of syllabus in terms of the load on the student	58	26	6	8	2
11	Rate the courses in terms of extra learning or self-learning considering the design of the courses	37	44	11	6	2
12	Rate the courses in terms of sequence of offering considering whether the preceding courses have been covered.	42	40	5	8	5
13	How do you rate the loading of the courses in a semester?	51	31	11	6	1
14	How do you rate the evaluation scheme designed for each of the course?	44	39	7	7	3
15	How do you rate the objectives stated for each of the course?	44	38	6	6	6
16	How do you rate competencies expected out of the course?	37	46	9	5	3
17	How do you rate the composition of the courses in terms of basic science, engineering science, humanities, discipline core, discipline elective, open elective, project etc.?	44	37	18	5	1
18	How do you rate the percentage of courses having lab components?	61	22	9	6	2
19	How do you rate the domain used for designing the experiments for the lab components?	51	37	8	2	2
20	How do you rate the experiments in relation to the real-life applications?	53	31	8	5	3



**PRINCIPAL**  
 PSN COLLEGE OF ENGINEERING & TECHNOLOGY  
 MELATHEDIYOOR, PALAYAMKOTTAI TALUK  
 TIRUNELVELI DIST. - 627 152.

**Department of Computer Science and Engineering**  
**STAKEHOLDER FEEDBACK ON CURRICULUM & TEACHING-LEARNING ANALYSIS**  
 Academic Year 2017-18

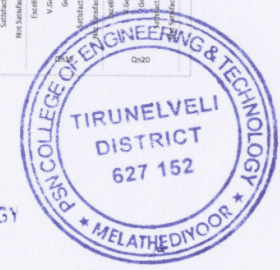


*[Handwritten Signature]*

Head of the Department  
 Department of Computer Science & Engineering,  
 PSN College of Engineering & Technology  
 (Autonomous Institution)  
 Melathediyoor, Taluk Palayamkottai, Tirunelveli District, Tamil Nadu - 627 152.

*[Handwritten Signature]*

**PRINCIPAL**  
 PSN COLLEGE OF ENGINEERING & TECHNOLOGY  
 MELATHEDIYOOR, PALAYAMKOTTAI TALUK  
 TIRUNELVELI DIST. - 627 152.



# PSN College of Engineering and Technology (Autonomous)



Melathediyoor, Tirunelveli - 627 152, Tamilnadu  
 Approved by AICTE and Affiliated to Anna University  
 Accredited by NAAC and Recognised by UGC under section 2(f) and 12(B)  
 An ISO 9001 : 2015 Certified Institution



Website: www.psnacet.ac.in  
 Phone: 04634 279009, 04634 279680.

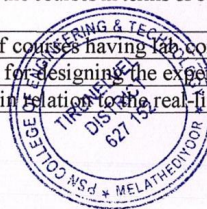
E-Mail: principal@psnacet.ac.in

## Feed Back Analysis Report

(Data provided are in percentage)

Name of the Department: Electronics and Communication Engineering

Qn. No.	Question	Excel.	V. Good	Good	Satis.	Not Satis.
1	How do you rate the sequence of the courses that you have studied are in sequence to what you have studied in the previous semester?	54	41	5	0	0
2	How do you rate the syllabus of the courses that you have studied in relation to the competencies expected out of the course?	62	38	0	0	0
3	How do you rate the relevance of the units in syllabus relevant to the course?	60	35	5	0	0
4	How do you rate the sequence of the units in the course?	59	49	2	0	0
5	How do you rate the allocation of the credits to the courses?	45	40	10	5	0
6	How do you rate the distribution of the contact hours among the course components (L-T-P)?	50	50	0	0	0
7	How do you rate the offering of the electives in terms of their relevance to the specialization streams?	45	40	9	6	0
8	How do you rate the electives offered in relation to the Technological advancements?	55	35	5	5	0
9	How do you rate the relevance of the text books and reference books by their international recognition to the courses?	49	40	6	5	0
10	Rate the size of syllabus in terms of the load on the student	60	36	4	0	0
11	Rate the courses in terms of extra learning or self-learning considering the design of the courses	52	37	8	3	0
12	Rate the courses in terms of sequence of offering considering whether the preceding courses have been covered.	55	38	4	3	0
13	How do you rate the loading of the courses in a semester?	51	40	7	2	0
14	How do you rate the evaluation scheme designed for each of the course?	65	35	0	0	0
15	How do you rate the objectives stated for each of the course?	43	45	7	5	0
16	How do you rate competencies expected out of the course?	55	30	10	5	0
17	How do you rate the composition of the courses in terms of basic science, engineering science, humanities, discipline core, discipline elective, open elective, project etc.?	52	35	8	5	0
18	How do you rate the percentage of courses having lab components?	54	34	6	6	0
19	How do you rate the domain used for designing the experiments for the lab components?	45	45	5	5	0
20	How do you rate the experiments in relation to the real-life Applications?	50	40	5	5	0



**PRINCIPAL**  
 PSN COLLEGE OF ENGINEERING & TECHNOLOGY  
 MELATHEDIYOOR, PALAYAMKOTTAI TALUK  
 TIRUNELVELI DIST. - 627 152.





**PSN College of Engineering and Technology (AUTONOMOUS)**

Melathediyoor, Tirunelveli

(Approved by AICTE and Recognized by UGC Section 2 (f) and 12(B))

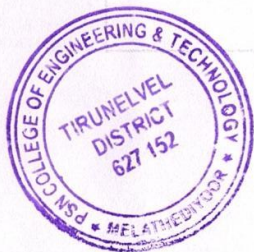
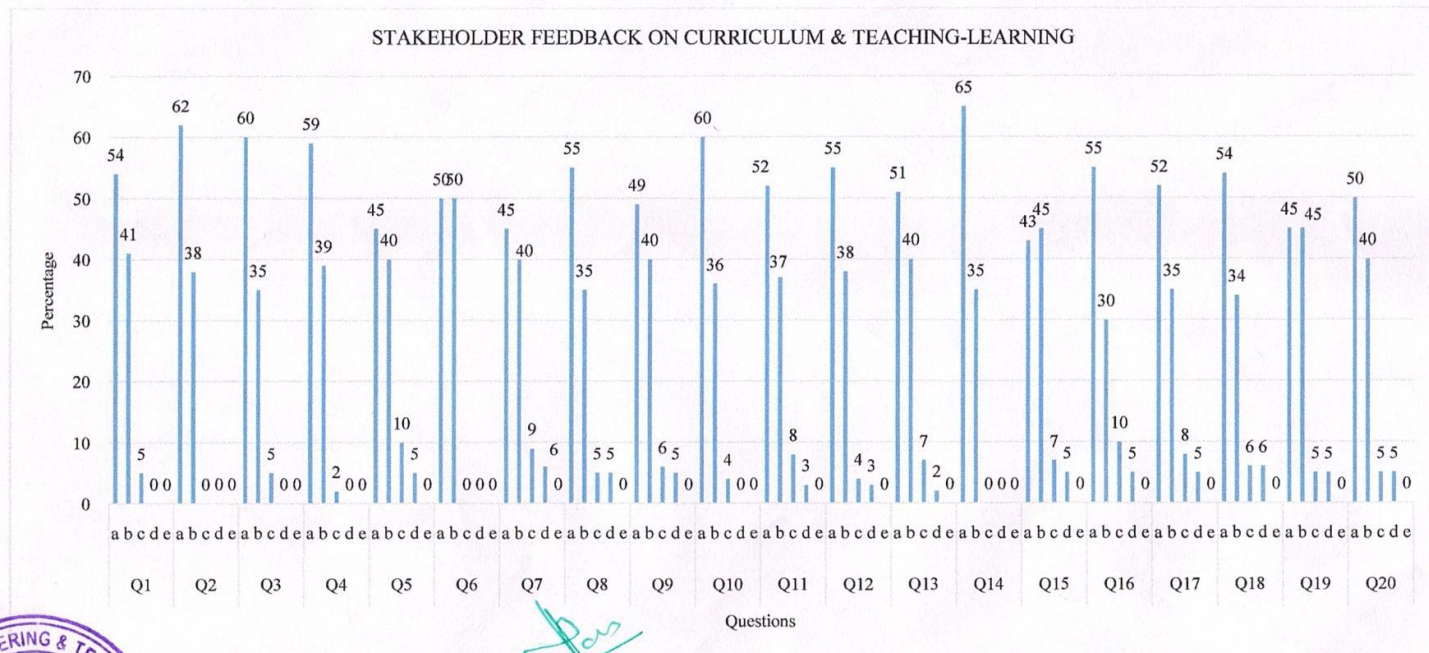
An ISO 9001:2015 Certified Institution

(Accredited by NAAC, Affiliated to Anna University Chennai)

**DEPARTMENT OF ELECTRONICS AND COMMUNICATION ENGINEERING 20-04-2018**

**STAKEHOLDER FEEDBACK ON CURRICULUM & TEACHING LEARNING ANALYSIS**

**Academic Year 2016-17**



**PRINCIPAL**

PSN COLLEGE OF ENGINEERING & TECHNOLOGY  
MELATHEDIYOOR, PALAYAMKOTTAI TALUK  
TIRUNELVELI DIST - 627 152.

HOD/ECE

**PROF AND HEAD**  
Department Of ECE  
PSN College Of Engg & Tech  
Melathediyoor  
Tirunelveli - 627 152

# PSN College of Engineering and Technology (Autonomous)



Melathediyoor, Tirunelveli - 627 152, Tamilnadu  
 Approved by AICTE and Affiliated to Anna University  
 Accredited by NAAC and Recognised by UGC under section 2(f) and 12(B)  
 An ISO 9001 : 2015 Certified Institution



Website: www.psnacet.ac.in  
 Phone: 04634 279009, 04634 279680.

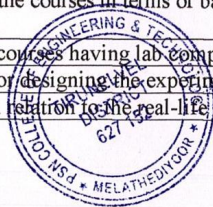
E-Mail: principal@psnacet.ac.in

## Feed Back Analysis Report

(Data provided are in percentage)

Name of the Department: Electrical and Electronics Engineering

Qn. No.	Question	Excel.	V. Good	Good	Satis.	Not Satis.
1	How do you rate the sequence of the courses that you have studied are in sequence to what you have studied in the previous semester?	55	40	5	0	0
2	How do you rate the syllabus of the courses that you have studied in relation to the competencies expected out of the course?	58	42	0	0	0
3	How do you rate the relevance of the units in syllabus relevant to the course?	65	30	5	0	0
4	How do you rate the sequence of the units in the course?	64	30	6	0	0
5	How do you rate the allocation of the credits to the courses?	42	40	10	8	0
6	How do you rate the distribution of the contact hours among the course components (L-T-P)?	42	58	0	0	0
7	How do you rate the offering of the electives in terms of their relevance to the specialization streams?	40	40	10	10	0
8	How do you rate the electives offered in relation to the Technological advancements?	54	36	5	5	0
9	How do you rate the relevance of the text books and reference books by their international recognition to the courses?	56	28	10	6	0
10	Rate the size of syllabus in terms of the load on the student	65	30	5	0	0
11	Rate the courses in terms of extra learning or self-learning considering the design of the courses	40	40	15	5	0
12	Rate the courses in terms of sequence of offering considering whether the preceding courses have been covered.	60	20	10	5	5
13	How do you rate the loading of the courses in a semester?	40	45	10	5	0
14	How do you rate the evaluation scheme designed for each of the course?	60	40	0	0	0
15	How do you rate the objectives stated for each of the course?	42	40	10	8	0
16	How do you rate competencies expected out of the course?	50	35	10	5	0
17	How do you rate the composition of the courses in terms of basic science, engineering science, humanities, discipline core, discipline elective, open elective, project etc.?	55	30	10	5	0
18	How do you rate the percentage of courses having lab components?	60	25	10	5	0
19	How do you rate the domain used for designing the experiments for the lab components?	40	40	10	5	5
20	How do you rate the experiments in relation to the real-life Applications?	50	30	15	5	0



**PRINCIPAL**  
 PSN COLLEGE OF ENGINEERING & TECHNOLOGY  
 MELATHEDIYOOR, PALAYANKOTTAI TALUK  
 TIRUNELVELI DIST. - 627 152.



**PSN College of Engineering and Technology**

(An Autonomous Institution)

Accredited by NAAC and Affiliated to Anna University, Chennai.

ISO 9001-2015 Certified

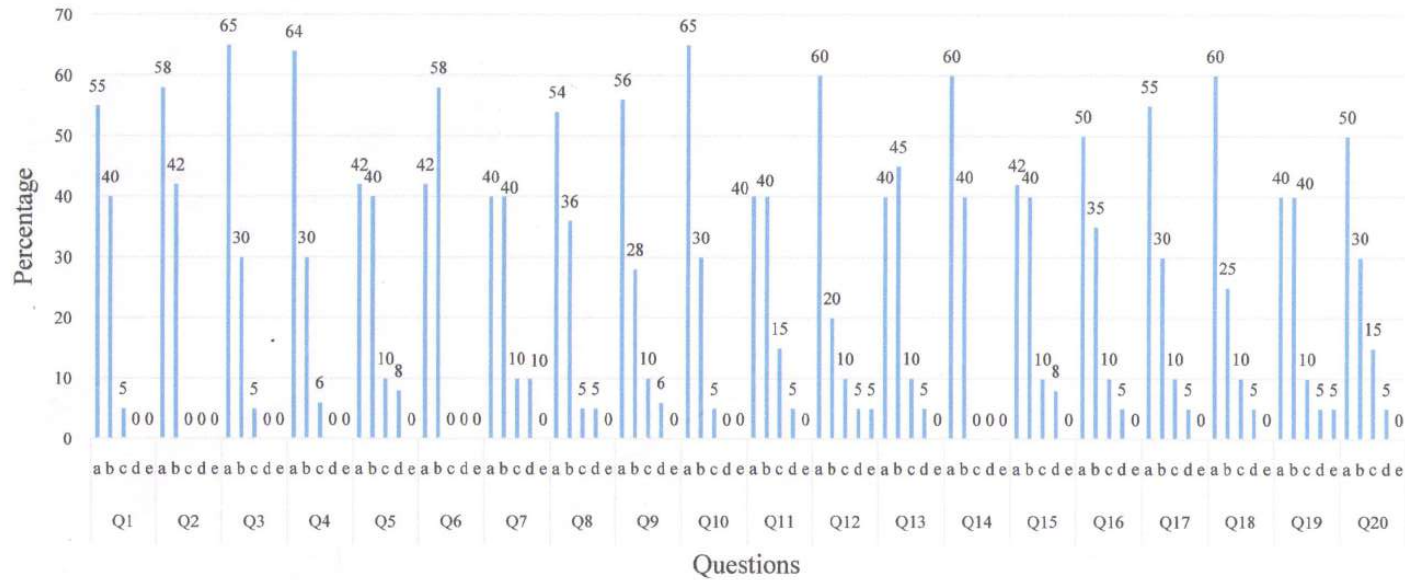
Recognised by UGC Under Section 2f & 12B status.

Melathediyoor, Tirunelveli - 627 152.

**DEPARTMENT OF ELECTRICAL AND ELECTRONICS ENGINEERING**

Date: 02.04.2018

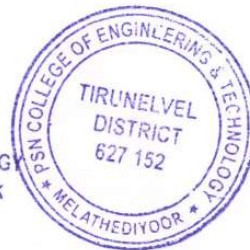
**STAKEHOLDER FEEDBACK ON CURRICULUM & TEACHING-LEARNING**



*[Handwritten Signature]*

**PRINCIPAL**

PSN COLLEGE OF ENGINEERING & TECHNOLOGY  
MELATHEDIYOOR, PALAYAMKOTTAI TALUK  
TIRUNELVELI DIST. - 627 152.



*[Handwritten Signature]*

Head of the Department / EEE  
Head of the Department,  
Dept. of EEE  
PSN College of Engg & Tech  
Tirunelveli - 627152

# PSN College of Engineering and Technology (Autonomous)



Melathediyoor, Tirunelveli - 627 152, Tamilnadu  
 Approved by AICTE and Affiliated to Anna University  
 Accredited by NAAC and Recognised by UGC under section 2(f) and 12(B)  
 An ISO 9001 : 2015 Certified Institution



Website: www.psnacet.ac.in  
 Phone: 04634 279009, 04634 279680.

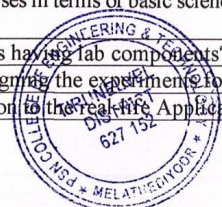
E-Mail: principal@psnacet.ac.in

## Feed Back Analysis Report

(Data provided are in percentage)

Name of the Department: Electronics and Instrumentation Engineering

Qn. No.	Question	Excel.	V. Good	Good	Satis.	Not Satis.
1	How do you rate the sequence of the courses that you have studied are in sequence to what you have studied in the previous semester?	55	40	5	0	0
2	How do you rate the syllabus of the courses that you have studied in relation to the competencies expected out of the course?	58	42	0	0	0
3	How do you rate the relevance of the units in syllabus relevant to the course?	65	30	5	0	0
4	How do you rate the sequence of the units in the course?	64	30	6	0	0
5	How do you rate the allocation of the credits to the courses?	57	35	4	4	0
6	How do you rate the distribution of the contact hours among the course components (L-T-P)?	42	58	0	0	0
7	How do you rate the offering of the electives in terms of their relevance to the specialization streams?	50	40	5	5	0
8	How do you rate the electives offered in relation to the Technological advancements?	54	36	5	5	0
9	How do you rate the relevance of the text books and reference books by their international recognition to the courses?	59	33	5	3	0
10	Rate the size of syllabus in terms of the load on the student	65	30	5	0	0
11	Rate the courses in terms of extra learning or self-learning considering the design of the courses	50	40	6	4	0
12	Rate the courses in terms of sequence of offering considering whether the preceding courses have been covered.	60	20	10	5	5
13	How do you rate the loading of the courses in a semester?	44	48	6	2	0
14	How do you rate the evaluation scheme designed for each of the course?	60	40	0	0	0
15	How do you rate the objectives stated for each of the course?	47	40	5	4	0
16	How do you rate competencies expected out of the course?	55	35	5	5	0
17	How do you rate the composition of the courses in terms of basic science, engineering science, humanities, discipline core, discipline elective, open elective, project etc.?	55	35	5	5	0
18	How do you rate the percentage of courses having lab components?	60	25	10	5	0
19	How do you rate the domain used for designing the experiments for the lab components?	40	40	10	5	5
20	How do you rate the experiments in relation to the real-life Applications?	50	30	15	5	0



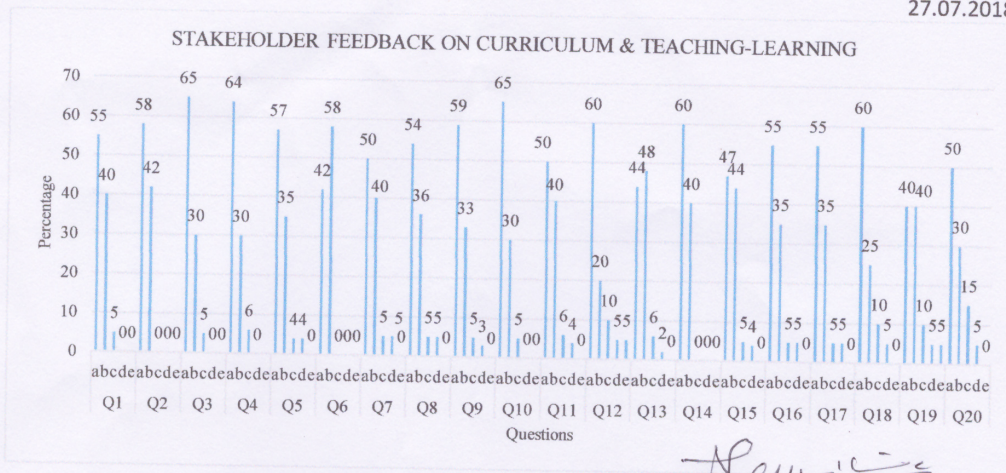
*Principal*  
**PRINCIPAL**  
 PSN COLLEGE OF ENGINEERING & TECHNOLOGY  
 MELATHEDIYOOR, PALAYAMKOTTAI TALUK  
 TIRUNELVELI DIST. - 627 152.

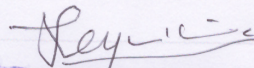


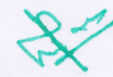
**PSN College of Engineering and Technology (Autonomous)**  
 Melathediyoor, Tirunelveli- 627152, Tamilnadu  
 (Approved by AICTE and Recognized by UGC Section 2 (f))  
 An ISO 9001:2015 Certified Institution  
 (Accredited by NAAC, Affiliated to Anna University, Chennai)

**DEPARTMENT OF ELECTRONICS AND INSTRUMENTATION ENGINEERING**

27.07.2018



  
**Head of the Department**  
**Department of EIE**  
 PSN College of Engineering and Technology  
 Melathediyoor, TIR.





**PRINCIPAL**  
 PSN COLLEGE OF ENGINEERING & TECHNOLOGY  
 MELATHEDIYOOR, PALAYAMKOTTAI TALUK  
 TIRUNELVELI DIST. - 627 152.

# PSN College of Engineering and Technology (Autonomous)



Melathediyoor, Tirunelveli - 627 152, Tamilnadu  
 Approved by AICTE and Affiliated to Anna University  
 Accredited by NAAC and Recognised by UGC under section 2(f) and 12(B)  
 An ISO 9001 : 2015 Certified Institution



Website: www.psnacet.ac.in  
 Phone: 04634 279009, 04634 279680.

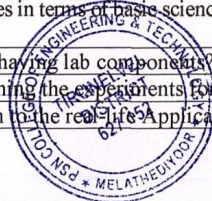
E-Mail: principal@psnacet.ac.in

## Feed Back Analysis Report

(Data provided are in percentage)

Name of the Department: Marine Engineering

Qn. No.	Question	Excel.	V. Good	Good	Satis.	Not Satis.
1	How do you rate the sequence of the courses that you have studied are in sequence to what you have studied in the previous semester?	74	17	9	0	0
2	How do you rate the syllabus of the courses that you have studied in relation to the competencies expected out of the course?	75	18	7	0	0
3	How do you rate the relevance of the units in syllabus relevant to the course?	79	15	6	0	0
4	How do you rate the sequence of the units in the course?	69	21	10	0	0
5	How do you rate the allocation of the credits to the courses?	72	19	9	0	0
6	How do you rate the distribution of the contact hours among the course components (L-T-P)?	74	19	7	0	0
7	How do you rate the offering of the electives in terms of their relevance to the specialization streams?	70	20	10	0	0
8	How do you rate the electives offered in relation to the Technological advancements?	73	21	6	0	0
9	How do you rate the relevance of the text books and reference books by their international recognition to the courses?	66	26	8	0	0
10	Rate the size of syllabus in terms of the load on the student	75	16	9	0	0
11	Rate the courses in terms of extra learning or self-learning considering the design of the courses	81	16	3	0	0
12	Rate the courses in terms of sequence of offering considering whether the preceding courses have been covered.	77	18	5	0	0
13	How do you rate the loading of the courses in a semester?	78	13	9	0	0
14	How do you rate the evaluation scheme designed for each of the course?	80	15	5	0	0
15	How do you rate the objectives stated for each of the course?	69	20	11	0	0
16	How do you rate competencies expected out of the course?	74	19	8	0	0
17	How do you rate the composition of the courses in terms of basic science, engineering science, humanities, discipline core, discipline elective, open elective, project etc.?	72	21	7	0	0
18	How do you rate the percentage of courses having lab components?	70	21	9	0	0
19	How do you rate the domain used for designing the experiments for the lab components?	75	16	9	0	0
20	How do you rate the experiments in relation to the real life applications?	79	14	7	0	0



**PRINCIPAL**  
 PSN COLLEGE OF ENGINEERING & TECHNOLOGY  
 MELATHEDIYOOR, PALAYANKOTTAI TALUK  
 TIRUNELVELI DIST. - 627 152.



**PSN COLLEGE OF ENGINEERING AND TECHNOLOGY(Autonomous)**

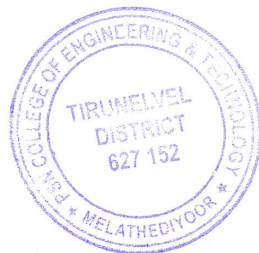
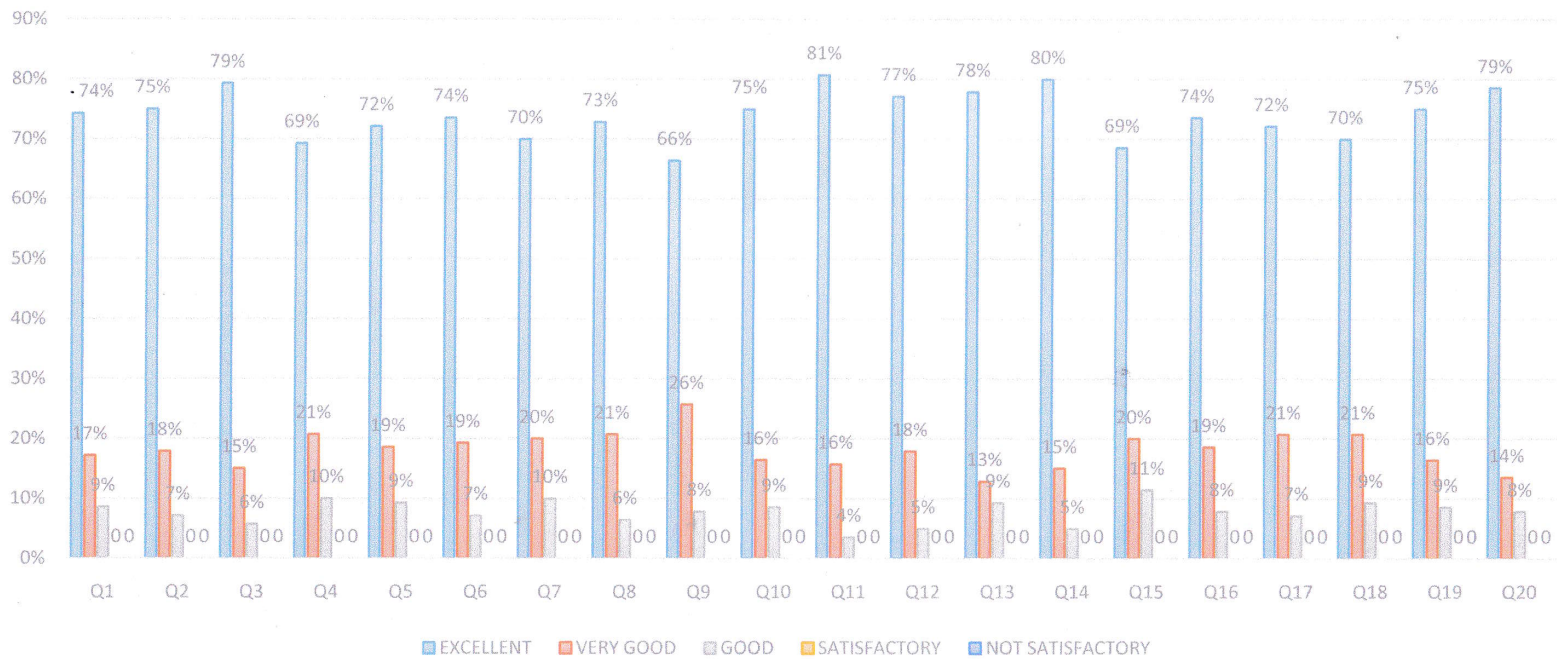
Melathediyoor, Tirunelveli – 627 152  
 Approved by AICTE and Recognized by UGC under section 2 (f), 12 (B)  
 An ISO 9001:2015 Certified Institution  
 Accredited By NAAC, Affiliated to Anna University, Chennai



**DEPARTMENT OF MARINE ENGINEERING**

hodmarine@psncet.ac.in

**FEEDBACK ANALYSIS ON CURRICULUM DESIGN**



*[Handwritten signature]*

**PRINCIPAL**  
 PSN COLLEGE OF ENGINEERING & TECHNOLOGY  
 MELATHEDIYOOR, PALAYAMKOTTAI TALUK  
 TIRUNELVELI DIST. - 627 152.

# PSN College of Engineering and Technology (Autonomous)



Melathediyoor, Tirunelveli - 627 152, Tamilnadu  
 Approved by AICTE and Affiliated to Anna University  
 Accredited by NAAC and Recognised by UGC under section 2(f) and 12(B)  
 An ISO 9001 : 2015 Certified Institution



Website: www.psnct.ac.in  
 Phone: 04634 279009, 04634 279680.

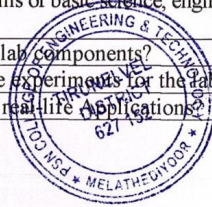
E-Mail: principal@psnct.ac.in

## Feed Back Analysis Report

(Data provided are in percentage)

Name of the Department: Mechanical and Automation Engineering

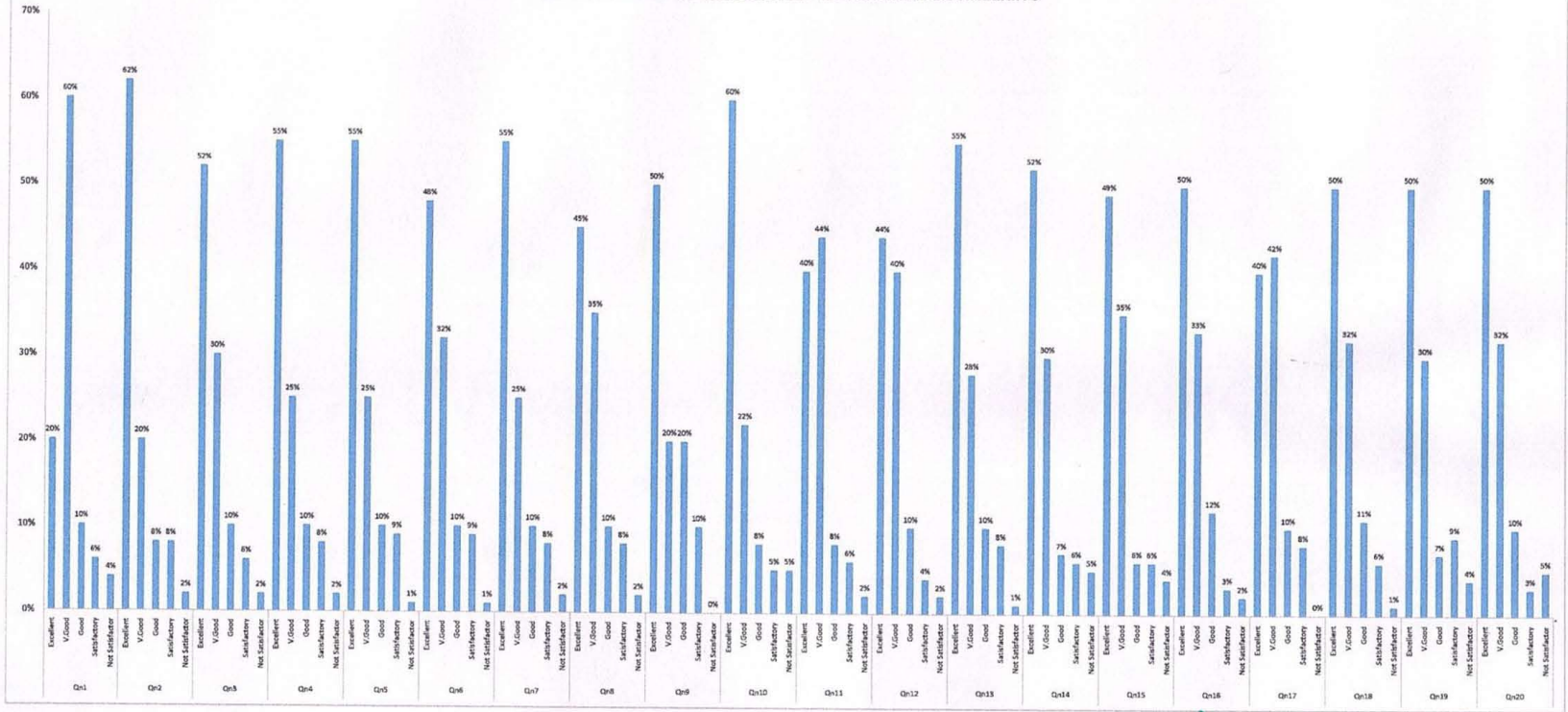
Qn. No.	Question	Excel.	V. Good	Good	Satis.	Not Satis.
1	How do you rate the sequence of the courses that you have studied are in sequence to what you have studied in the previous semester?	20	60	10	6	4
2	How do you rate the syllabus of the courses that you have studied in relation to the competencies expected out of the course?	62	20	8	8	2
3	How do you rate the relevance of the units in syllabus relevant to the course?	52	30	10	8	2
4	How do you rate the sequence of the units in the course?	55	25	10	8	2
5	How do you rate the allocation of the credits to the courses?	55	25	10	9	1
6	How do you rate the distribution of the contact hours among the course components (L-T-P)?	48	32	10	9	1
7	How do you rate the offering of the electives in terms of their relevance to the specialization streams?	55	25	10	8	2
8	How do you rate the electives offered in relation to the Technological advancements?	45	35	10	8	2
9	How do you rate the relevance of the text books and reference books by their international recognition to the courses?	50	20	20	10	0
10	Rate the size of syllabus in terms of the load on the student	60	22	8	5	5
11	Rate the courses in terms of extra learning or self-learning considering the design of the courses	40	44	8	6	2
12	Rate the courses in terms of sequence of offering considering whether the preceding courses have been covered.	44	40	10	4	6
13	How do you rate the loading of the courses in a semester?	55	28	10	8	1
14	How do you rate the evaluation scheme designed for each of the course?	52	30	7	6	5
15	How do you rate the objectives stated for each of the course?	49	35	8	8	4
16	How do you rate competencies expected out of the course?	50	33	12	3	2
17	How do you rate the composition of the courses in terms of basic science, engineering science, humanities, discipline core, discipline elective, open elective, project etc.?	40	42	10	8	0
18	How do you rate the percentage of courses having lab components?	50	32	11	6	1
19	How do you rate the domain used for designing the experiments for the lab components?	50	30	7	9	4
20	How do you rate the experiments in relation to the real life Applications?	50	82	10	3	5



*[Handwritten Signature]*  
**PRINCIPAL**  
 PSN COLLEGE OF ENGINEERING & TECHNOLOGY  
 MELATHEDIYOOR, PALAYAMKOTTAI TALUK  
 TIRUNELVELI DIST. - 627 152.



**STAKEHOLDER FEEDBACK ON CURRICULUM & TEACHING-LEARNING ANALYSIS**  
**Academic Year 2017-18**  
**DEPARTMENT OF MECHANICAL AND AUTOMATION ENGINEERING**



  
 Head of the Department



  
**PRINCIPAL**  
**PSN COLLEGE OF ENGINEERING & TECHNOLOGY**  
 MELATHEDIYOOR, PALAYAMKOTTAI TALUK  
 TIRUNELVELI DIST - 627 152.

# PSN College of Engineering and Technology (Autonomous)



Melathediyoor, Tirunelveli - 627 152, Tamilnadu  
 Approved by AICTE and Affiliated to Anna University  
 Accredited by NAAC and Recognised by UGC under section 2(f) and 12(B)  
 An ISO 9001 : 2015 Certified Institution



Website: www.psnacet.ac.in  
 Phone: 04634 279009, 04634 279680.

E-Mail: principal@psnacet.ac.in

## Feed Back Analysis Report

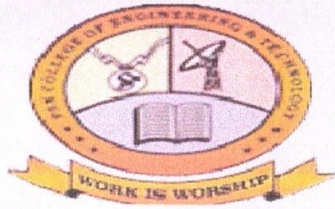
(Data provided are in percentage)

Name of the Department: Mechanical Engineering

Qn. No.	Question	Excel.	V. Good	Good	Satis.	Not Satis.
1	How do you rate the sequence of the courses that you have studied are in sequence to what you have studied in the previous semester?	60	38	2	0	0
2	How do you rate the syllabus of the courses that you have studied in relation to the competencies expected out of the course?	57	43	0	0	0
3	How do you rate the relevance of the units in syllabus relevant to the course?	71	25	4	0	0
4	How do you rate the sequence of the units in the course?	68	27	5	0	0
5	How do you rate the allocation of the credits to the courses?	55	38	7	0	0
6	How do you rate the distribution of the contact hours among the course components (L-T-P)?	52	48	0	0	0
7	How do you rate the offering of the electives in terms of their relevance to the specialization streams?	51	39	10	0	0
8	How do you rate the electives offered in relation to the Technological advancements?	60	40	0	0	0
9	How do you rate the relevance of the text books and reference books by their international recognition to the courses?	56	28	10	6	0
10	Rate the size of syllabus in terms of the load on the student	75	25	0	0	0
11	Rate the courses in terms of extra learning or self-learning considering the design of the courses	40	40	16	4	0
12	Rate the courses in terms of sequence of offering considering whether the preceding courses have been covered.	74	24	2	0	0
13	How do you rate the loading of the courses in a semester?	45	40	12	3	0
14	How do you rate the evaluation scheme designed for each of the course?	65	35	0	0	0
15	How do you rate the objectives stated for each of the course?	42	40	10	8	0
16	How do you rate competencies expected out of the course?	54	36	10	0	0
17	How do you rate the composition of the courses in terms of basic science, engineering science, humanities, discipline core, discipline elective, open elective, project etc.?	55	30	9	6	0
18	How do you rate the percentage of courses having lab components?	60	35	5	0	0
19	How do you rate the domain used for designing the experiments for the lab components?	42	42	16	0	0
20	How do you rate the experiments in relation to the real life Applications?	53	32	2	0	0



*[Signature]*  
**PRINCIPAL**  
 PSN COLLEGE OF ENGINEERING & TECHNOLOGY  
 MELATHEDIYOOR, PALAYAMKOTTAI TALUK  
 TIRUNELVELI DIST. - 627 152.



# PSN College of Engineering and Technology

(An Autonomous Institution)

Accredited by NAAC and Affiliated to Anna University, Chennai.

ISO 9001-2015 Certified.

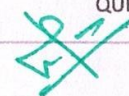
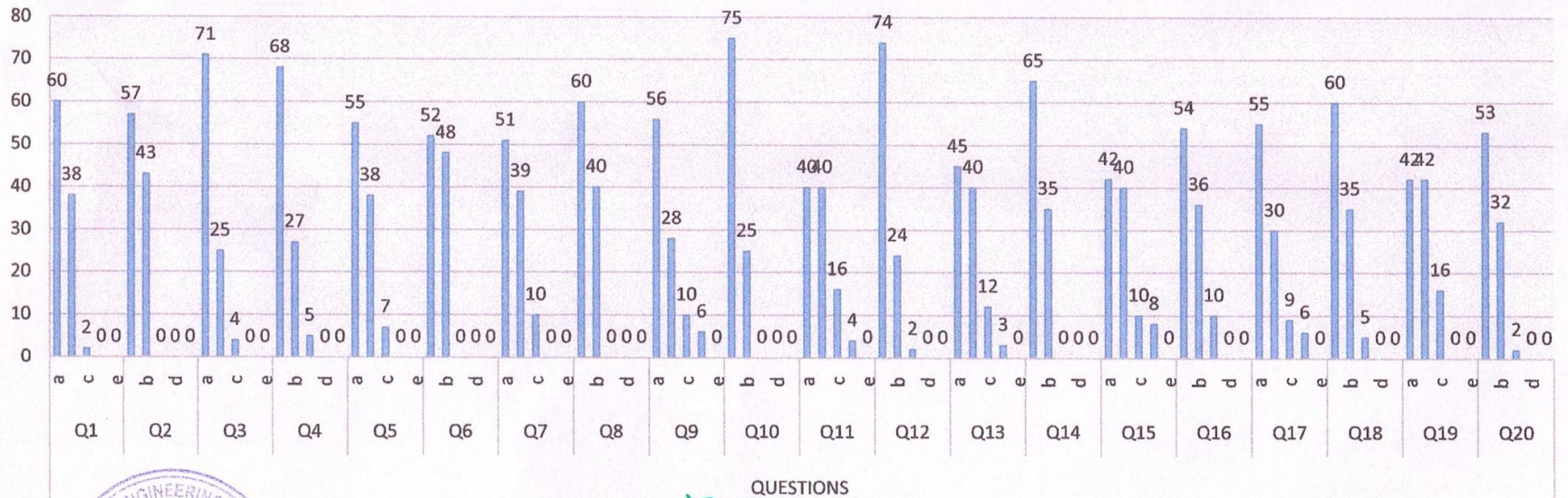
Recognised by UGC Under Section 21 & 12B status.

Melathediyoor, Tirunelveli - 627 152.

## DEPARTMENT OF MECHANICAL ENGINEERING

Date: 02.04.2018

### STAKEHOLDER FEEDBACK ON CURRICULUM & TEACHING - LEARNING



**PRINCIPAL**  
PSN COLLEGE OF ENGINEERING & TECHNOLOGY  
MELATHEDIYOOR, PALAYANKOTTAI TALUK,  
TIRUNELVELI DIST. - 627 152.

*N. L. Mani*  
**Head of the Department / Mech**  
**Head of the Department**  
Department of Mechanical Engineering  
PSN College of Engineering and Technology  
Melathediyoor, Tirunelveli - 627152.

# PSN College of Engineering and Technology (Autonomous)



Melathediyoor, Tirunelveli - 627 152, Tamilnadu  
 Approved by AICTE and Affiliated to Anna University  
 Accredited by NAAC and Recognised by UGC under section 2(f) and 12(B)  
 An ISO 9001 : 2015 Certified Institution



Website: www.psnacet.ac.in  
 Phone: 04634 279009, 04634 279680.

E-Mail: principal@psnacet.ac.in

## Feed Back Analysis Report

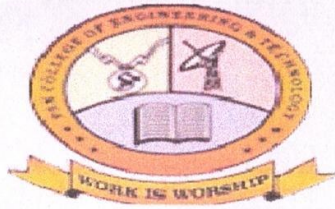
(Data provided are in percentage)

Name of the Department: Business Administration

Qn. No.	Question	Excel.	V. Good	Good	Satis.	Not Satis.
1	How do you rate the sequence of the courses that you have studied are in sequence to what you have studied in the previous semester?	10	50	20	14	6
2	How do you rate the syllabus of the courses that you have studied in relation to the competencies expected out of the course?	58	27	10	5	0
3	How do you rate the relevance of the units in syllabus relevant to the course?	35	38	17	8	2
4	How do you rate the sequence of the units in the course?	32	29	28	11	10
5	How do you rate the allocation of the credits to the courses?	35	32	20	8	5
6	How do you rate the distribution of the contact hours among the course components (L-T-P)?	40	35	17	7	1
7	How do you rate the offering of the electives in terms of their relevance to the specialization streams?	40	35	11	9	5
8	How do you rate the electives offered in relation to the Technological advancements?	50	22	17	7	4
9	How do you rate the relevance of the text books and reference books by their international recognition to the courses?	39	19	28	10	4
10	Rate the size of syllabus in terms of the load on the student	53	21	16	8	2
11	Rate the courses in terms of extra learning or self-learning considering the design of the courses	25	36	21	11	7
12	Rate the courses in terms of sequence of offering considering whether the preceding courses have been covered.	32	44	11	8	5
13	How do you rate the loading of the courses in a semester?	52	30	11	6	1
14	How do you rate the evaluation scheme designed for each of the course?	38	35	17	7	3
15	How do you rate the objectives stated for each of the course?	44	11	28	11	6
16	How do you rate competencies expected out of the course?	33	30	19	11	7
17	How do you rate the composition of the courses in terms of basic science, engineering science, humanities, discipline core, discipline elective, open elective, project etc.?	31	39	24	5	1
18	How do you rate the percentage of courses having lab components?	54	24	17	6	2
19	How do you rate the domain used for designing the experiments for the lab components?	41	23	22	10	4
20	How do you rate the experiments in relation to the real life applications?	40	39	13	5	3



*[Signature]*  
 PRINCIPAL  
 PSN COLLEGE OF ENGINEERING & TECHNOLOGY  
 MELATHEDIYOOR, PALAYAMKOTTAI TALUK  
 TIRUNELVELI DIST. - 627 152.



# PSN College of Engineering and Technology

(An Autonomous Institution)

Accredited by NAAC and Affiliated to Anna University, Chennai.

ISO 9001-2015 Certified.

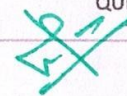
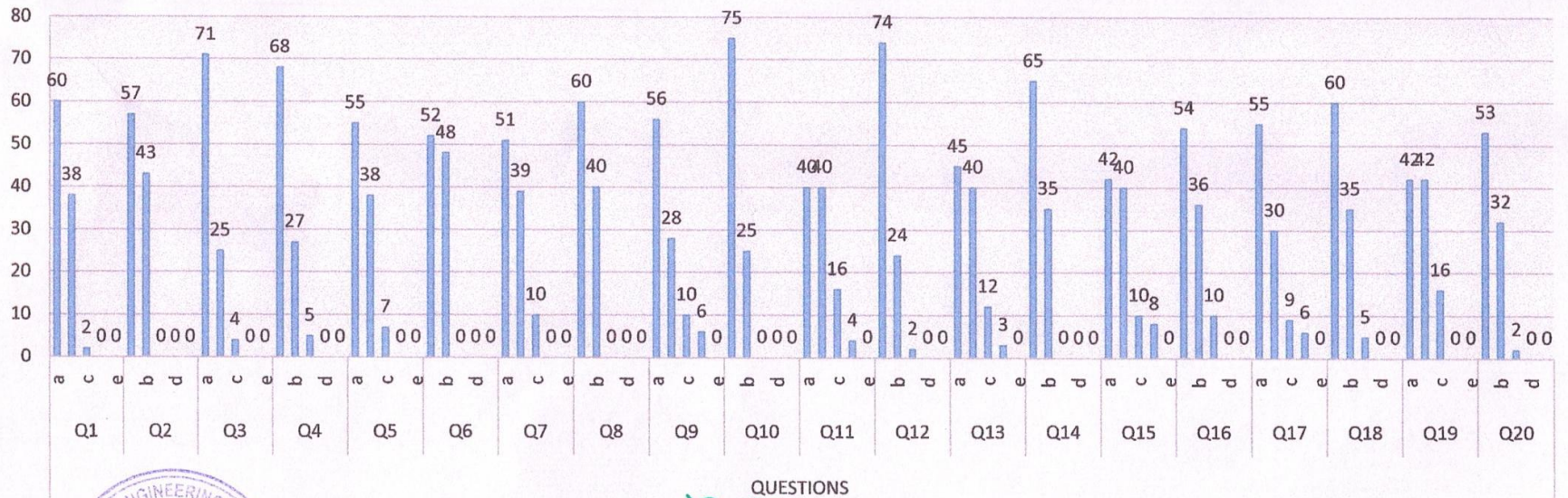
Recognised by UGC Under Section 21 & 12B status.

Melathediyoor, Tirunelveli - 627 152.

## DEPARTMENT OF MECHANICAL ENGINEERING

Date: 02.04.2018

### STAKEHOLDER FEEDBACK ON CURRICULUM & TEACHING - LEARNING



**PRINCIPAL**  
 PSN COLLEGE OF ENGINEERING & TECHNOLOGY  
 MELATHEDIYOOR, PALAYANKOTTAI TALUK,  
 TIRUNELVELI DIST. - 627 152.

*N. L. Mani*  
 Head of the Department / Mech  
 Head of the Department  
 Department of Mechanical Engineering  
 PSN College of Engineering and Technology  
 Melathediyoor, Tirunelveli - 627152.