

PSN College of Engineering and Technology (Autonomous)



Melathediyoor, Tirunelveli - 627 152, Tamilnadu
Approved by AICTE and Affiliated to Anna University
Accredited by NAAC and Recognised by UGC under section 2(f) and 12(B)
An ISO 9001 : 2015 Certified Institution



Website: www.psncet.ac.in
Phone: 04634 279009, 04634 279680.

E-Mail: principal@psncet.ac.in

Feedback on Curriculum: Analysis

Department	Link to Document
Aeronautical Engineering	View Document
Civil Engineering	View Document
Computer Science and Engineering	View Document
Electronics and Communication Engineering	View Document
Electrical and Electronics Engineering	View Document
Electronics and Instrumentation Engineering	View Document
Marine Engineering	View Document
Mechanical and Automation Engineering	View Document
Mechanical Engineering	View Document
Business Administration	View Document

PSN College of Engineering and Technology (Autonomous)



Melathediyoor, Tirunelveli - 627 152, Tamilnadu
 Approved by AICTE and Affiliated to Anna University
 Accredited by NAAC and Recognised by UGC under section 2(f) and 12(B)
 An ISO 9001 : 2015 Certified Institution



Website: www.psnceet.ac.in
 Phone: 04634 279009, 04634 279680,

E-Mail: principal@psncoet.ac.in

Feed Back Analysis Report

(Data provided are in percentage)

Name of the Department: Aeronautical Engineering

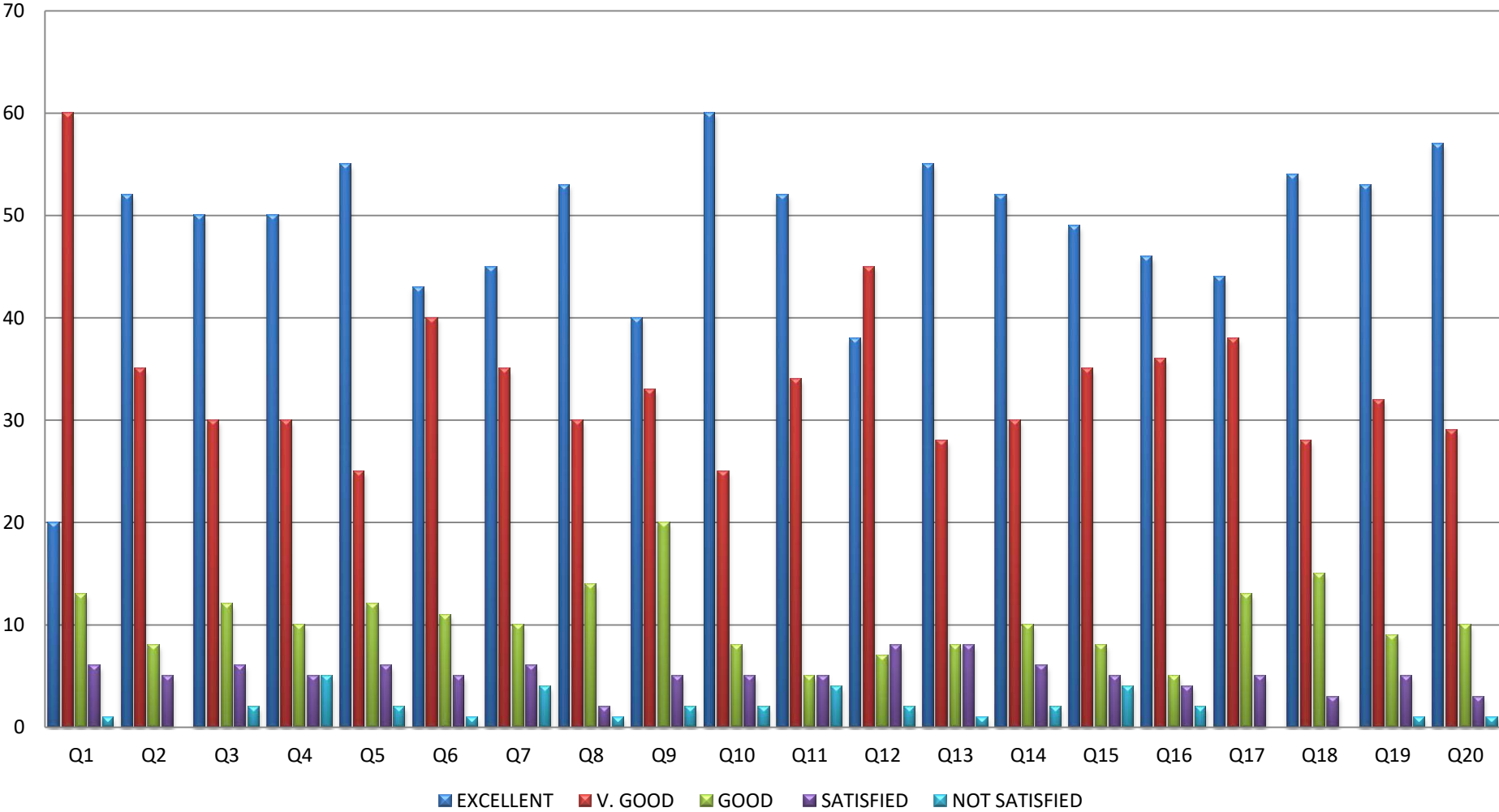
Qn. No.	Question	Excel.	V. Good	Good	Satis.	Not Satis.
1	How do you rate the sequence of the courses that you have studied are in sequence to what you have studied in the previous semester?	20	60	13	6	1
2	How do you rate the syllabus of the courses that you have studied in relation to the competencies expected out of the course?	52	35	8	5	0
3	How do you rate the relevance of the units in syllabus relevant to the course?	50	30	12	6	2
4	How do you rate the sequence of the units in the course?	50	30	10	5	5
5	How do you rate the allocation of the credits to the courses?	55	25	12	6	2
6	How do you rate the distribution of the contact hours among the course components (L-T-P)?	43	40	11	5	1
7	How do you rate the offering of the electives in terms of their relevance to the specialization streams?	45	35	10	6	4
8	How do you rate the electives offered in relation to the Technological advancements?	53	30	14	2	1
9	How do you rate the relevance of the text books and reference books by their international recognition to the courses?	40	33	20	5	2
10	Rate the size of syllabus in terms of the load on the student	60	25	8	5	2
11	Rate the courses in terms of extra learning or self-learning considering the design of the courses	52	34	5	5	4
12	Rate the courses in terms of sequence of offering considering whether the preceding courses have been covered.	38	45	7	8	2
13	How do you rate the loading of the courses in a semester?	55	28	8	8	1
14	How do you rate the evaluation scheme designed for each of the course?	52	30	10	6	2
15	How do you rate the objectives stated for each of the course?	49	35	8	5	4
16	How do you rate competencies expected out of the course?	46	36	12	4	2
17	How do you rate the composition of the courses in terms of basic science, engineering science, humanities, discipline core, discipline elective, open elective, project etc?	44	38	13	5	0
18	How do you rate the percentage of courses having lab components?	54	28	15	3	0
19	How do you rate the domain used for designing the experiments for the lab components?	53	32	9	5	1
20	How do you rate the experiments in relation to the real life Applications?	57	29	10	3	1



Handwritten initials: N/S

PRINCIPAL
 PSN COLLEGE OF ENGINEERING & TECHNOLOGY
 MELATHEDIYOOR, PHALAYANDOTTAI TALUK
 TIRUNELVELI DIST. - 627 152.

AERONAUTICAL ENGINEERING



PSN College of Engineering and Technology (Autonomous)



Melathediyoor, Tirunelveli - 627 152, Tamilnadu
 Approved by AICTE and Affiliated to Anna University
 Accredited by NAAC and Recognised by UGC under section 2(f) and 12(B)
 An ISO 9001 : 2015 Certified Institution



Website: www.psnacet.ac.in
 Phone: 04634 279009, 04634 279680.

E-Mail: principal@psnacet.ac.in

Feedback Analysis Report

(Data provided are in percentage)

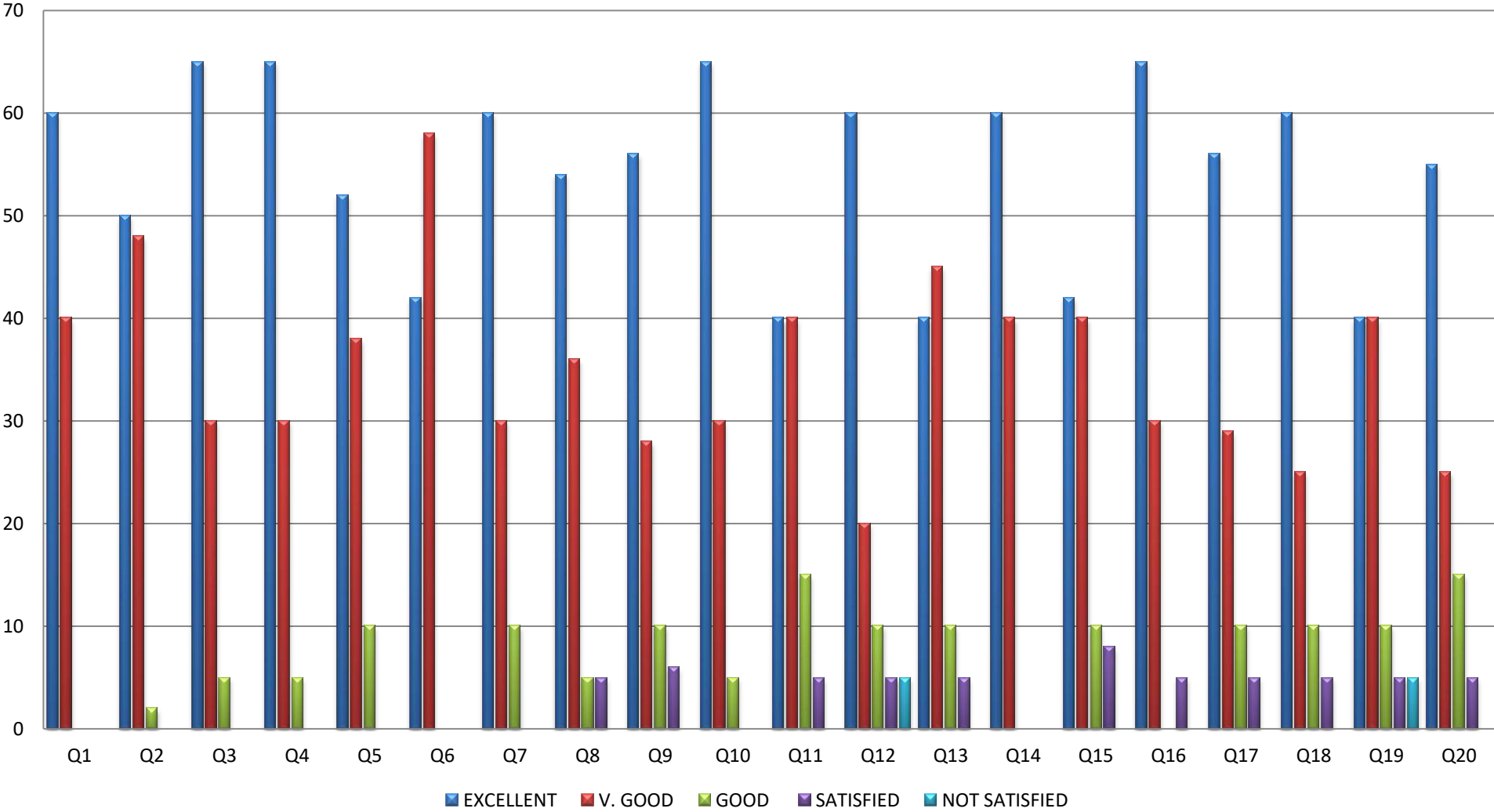
Name of the Department: Civil Engineering

Qn. No.	Question	Excel.	V. Good	Good	Satis.	Not Satis.
1	How do you rate the sequence of the courses that you have studied are in sequence to what you have studied in the previous semester?	60	40	0	0	0
2	How do you rate the syllabus of the courses that you have studied in relation to the competencies expected out of the course?	50	48	2	0	0
3	How do you rate the relevance of the units in syllabus relevant to the course?	65	30	5	0	0
4	How do you rate the sequence of the units in the course?	65	30	5	0	0
5	How do you rate the allocation of the credits to the courses?	52	38	10	0	0
6	How do you rate the distribution of the contact hours among the course components (L-T-P)?	42	58	0	0	0
7	How do you rate the offering of the electives in terms of their relevance to the specialization streams?	60	30	10	0	0
8	How do you rate the electives offered in relation to the Technological advancements?	54	36	5	5	0
9	How do you rate the relevance of the text books and reference books by their international recognition to the courses?	56	28	10	6	0
10	Rate the size of syllabus in terms of the load on the student	65	30	5	0	0
11	Rate the courses in terms of extra learning or self-learning considering the design of the courses	40	40	15	5	0
12	Rate the courses in terms of sequence of offering considering whether the preceding courses have been covered.	60	20	10	5	5
13	How do you rate the loading of the courses in a semester?	40	45	10	5	0
14	How do you rate the evaluation scheme designed for each of the course?	60	40	0	0	0
15	How do you rate the objectives stated for each of the course?	42	40	10	8	0
16	How do you rate competencies expected out of the course?	65	30	0	5	0
17	How do you rate the composition of the courses in terms of basic science, engineering science, humanities, discipline core, discipline elective, open elective, project etc?	56	29	10	5	0
18	How do you rate the percentage of courses having lab components?	60	25	10	5	0
19	How do you rate the domain used for designing the experiments for the lab components?	40	40	10	5	5
20	How do you rate the experiments in relation to the real life applications?	55	25	15	5	0



[Signature]
PRINCIPAL
 PSN COLLEGE OF ENGINEERING & TECHNOLOGY
 MELATHEDIYOOR, PALANMATTAI TALUK
 TIRUNELVELI DIST - 627 152.

CIVIL ENGINEERING



PSN College of Engineering and Technology (Autonomous)



Melathediyoor, Tirunelveli - 627 152, Tamilnadu
 Approved by AICTE and Affiliated to Anna University
 Accredited by NAAC and Recognised by UGC under section 2(F) and 12(B)
 An ISO 9001 : 2015 Certified Institution



Website: www.psnacet.ac.in
 Phone: 04634 279009, 04634 279680.

E-Mail: principal@psnacet.ac.in

Feedback Analysis Report

(Data provided are in percentage)

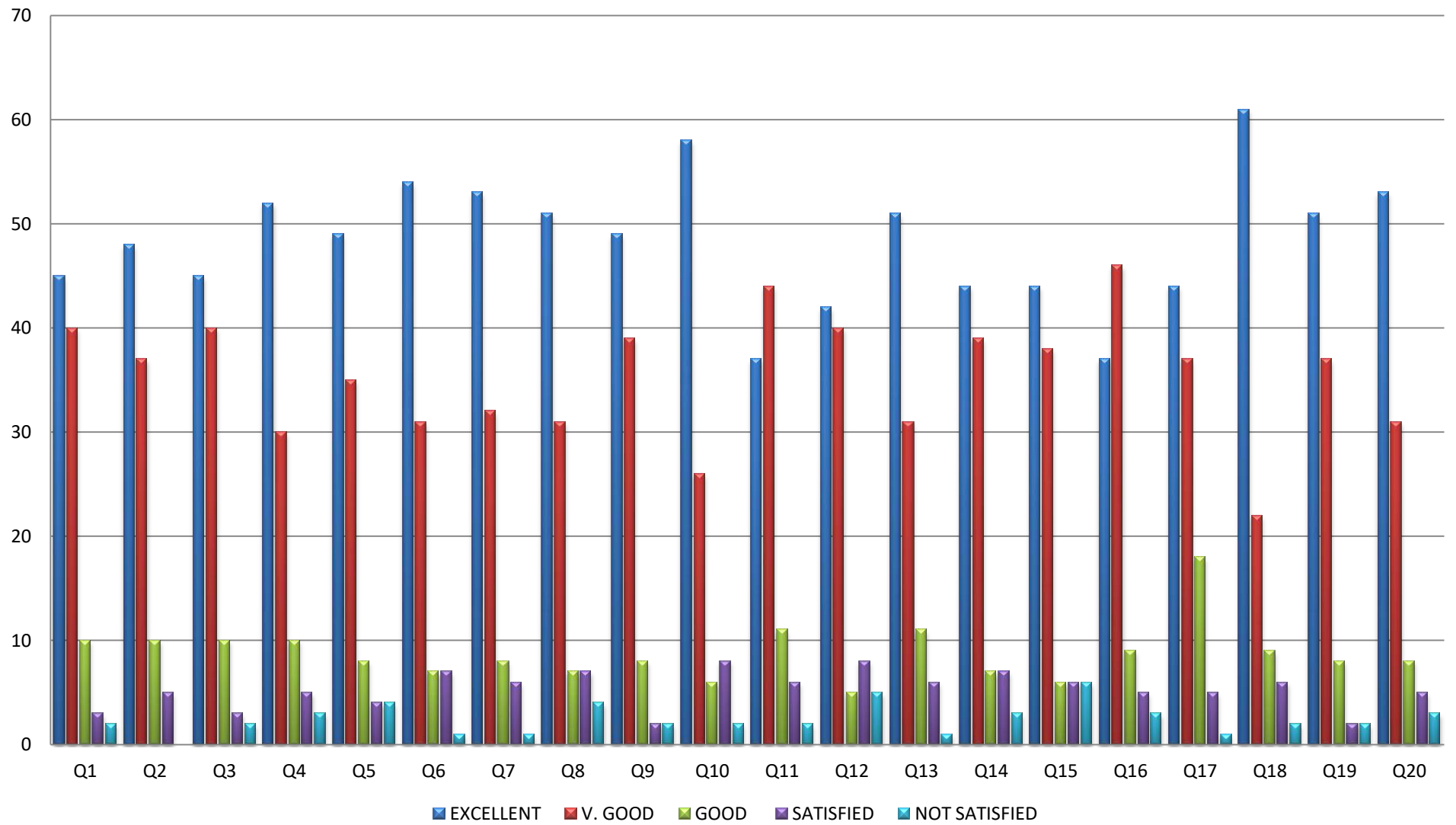
Name of the Department: Computer Science and Engineering

Qn. No.	Question	Excel.	V. Good	Good	Satis.	Not Satis.
1	How do you rate the sequence of the courses that you have studied are in sequence to what you have studied in the previous semester?	45	40	10	3	2
2	How do you rate the syllabus of the courses that you have studied in relation to the competencies expected out of the course?	48	37	10	5	0
3	How do you rate the relevance of the units in syllabus relevant to the course?	45	40	10	3	2
4	How do you rate the sequence of the units in the course?	52	30	10	5	3
5	How do you rate the allocation of the credits to the courses?	49	35	8	4	4
6	How do you rate the distribution of the contact hours among the course components (L.T.P)?	54	31	7	7	1
7	How do you rate the offering of the electives in terms of their relevance to the specialization streams?	53	32	8	6	1
8	How do you rate the electives offered in relation to the Technological advancements?	51	31	7	7	4
9	How do you rate the relevance of the text books and reference books by their international recognition to the courses?	49	39	8	2	2
10	Rate the size of syllabus in terms of the load on the student	58	26	6	8	2
11	Rate the courses in terms of extra learning or self-learning considering the design of the courses	37	44	11	6	2
12	Rate the courses in terms of sequence of offering considering whether the preceding courses have been covered.	42	40	5	8	5
13	How do you rate the loading of the courses in a semester?	51	31	11	6	1
14	How do you rate the evaluation scheme designed for each of the course?	44	39	7	7	3
15	How do you rate the objectives stated for each of the course?	44	38	6	6	6
16	How do you rate competencies expected out of the course?	37	46	9	5	3
17	How do you rate the composition of the courses in terms of basic science, engineering science, humanities, discipline core, discipline elective, open elective, project etc?	44	37	18	5	1
18	How do you rate the percentage of courses having the open elective?	61	22	9	6	2
19	How do you rate the domain used for designing the experiments for the lab components?	51	37	8	2	2
20	How do you rate the experiments in relation to the real-life Applications?	53	31	8	5	3



PRINCIPAL
 PSN COLLEGE OF ENGINEERING & TECHNOLOGY
 MELATHEDIYOOR, PALAYAMKOTTAI TALUK,
 TIRUNELVELI DIST. - 627 152.

COMPUTER SCIENCE ENGINEERING



PSN College of Engineering and Technology (Autonomous)



Melathediyoor, Tirunelveli - 627 152, Tamilnadu
 Approved by AICTE and Affiliated to Anna University
 Accredited by NAAC and Recognised by UGC under section 2(f) and 12(B)
 An ISO 9001 : 2015 Certified Institution



Website: www.psnacet.ac.in
 Phone: 04634 279009, 04634 279680.

E-Mail: principal@psnacet.ac.in

Feed Back Analysis Report

(Data provided are in percentage)

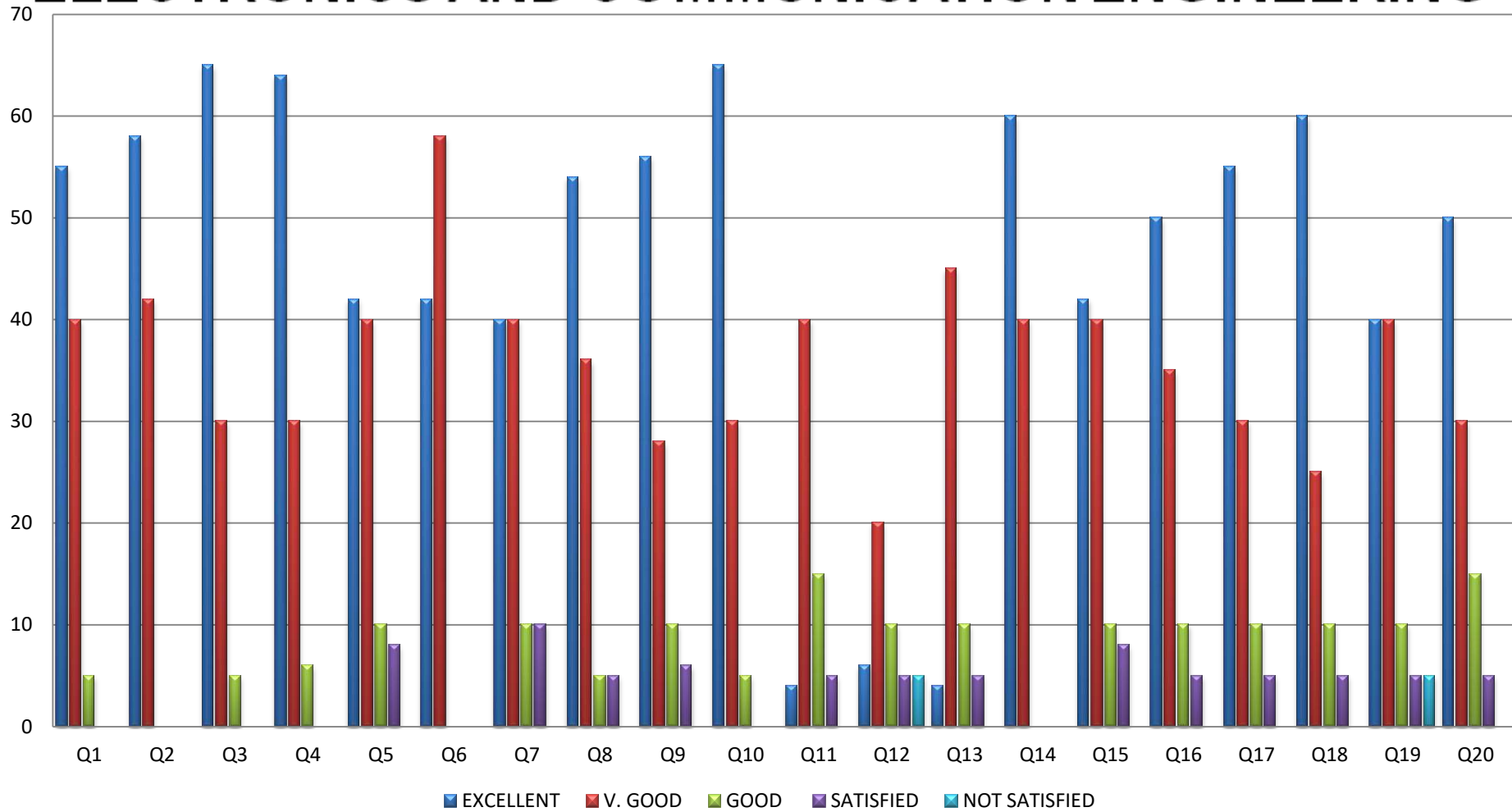
Name of the Department: Electronics and Communication Engineering

Qn. No.	Question	Excel.	V. Good	Good	Satis.	Not Satis.
1	How do you rate the sequence of the courses that you have studied are in sequence to what you have studied in the previous semester?	54	41	5	0	0
2	How do you rate the syllabus of the courses that you have studied in relation to the competencies expected out of the course?	62	38	0	0	0
3	How do you rate the relevance of the units in syllabus relevant to the course?	60	35	5	0	0
4	How do you rate the sequence of the units in the course?	59	49	2	0	0
5	How do you rate the allocation of the credits to the courses?	45	40	10	5	0
6	How do you rate the distribution of the contact hours among the course components (L-T-P)?	50	50	0	0	0
7	How do you rate the offering of the electives in terms of their relevance to the specialization streams?	45	40	9	6	0
8	How do you rate the electives offered in relation to the Technological advancements?	55	35	5	5	0
9	How do you rate the relevance of the text books and reference books by their international recognition to the courses?	49	40	6	5	0
10	Rate the size of syllabus in terms of the load on the student	60	36	4	0	0
11	Rate the courses in terms of extra learning or self-learning considering the design of the courses	52	37	8	3	0
12	Rate the courses in terms of sequence of offering considering whether the preceding courses have been covered.	55	38	4	3	0
13	How do you rate the loading of the courses in a semester?	51	40	7	2	0
14	How do you rate the evaluation scheme designed for each of the course?	65	35	0	0	0
15	How do you rate the objectives stated for each of the course?	43	45	7	5	0
16	How do you rate competencies expected out of the course?	55	30	10	5	0
17	How do you rate the composition of the courses in terms of basic science, engineering science, humanities, discipline core, discipline elective, open elective, project etc?	52	35	8	5	0
18	How do you rate the percentage of courses having lab components?	54	34	6	6	0
19	How do you rate the domain used for designing the experiments for the lab components?	45	45	5	5	0
20	How do you rate the experiments in relation to real-life Applications?	50	40	5	5	0



PRINCIPAL
 PSN COLLEGE OF ENGINEERING & TECHNOLOGY
 MELATHEDIYOOR, PALAYAMKOTTAI TALUK
 TIRUNELVELI DIST. - 627 152

ELECTRONICS AND COMMUNICATION ENGINEERING



PSN College of Engineering and Technology (Autonomous)



Melathediyoor, Tirunelveli - 627 152, Tamilnadu
 Approved by AICTE and Affiliated to Anna University
 Accredited by NAAC and Recognised by UGC under section 2(f) and 12(B)
 An ISO 9001 : 2015 Certified Institution



Website: www.psnceet.ac.in
 Phone: 04634 279009, 04634 279680.

E-Mail: principal@psnceet.ac.in

Feed Back Analysis Report

(Data provided are in percentage)

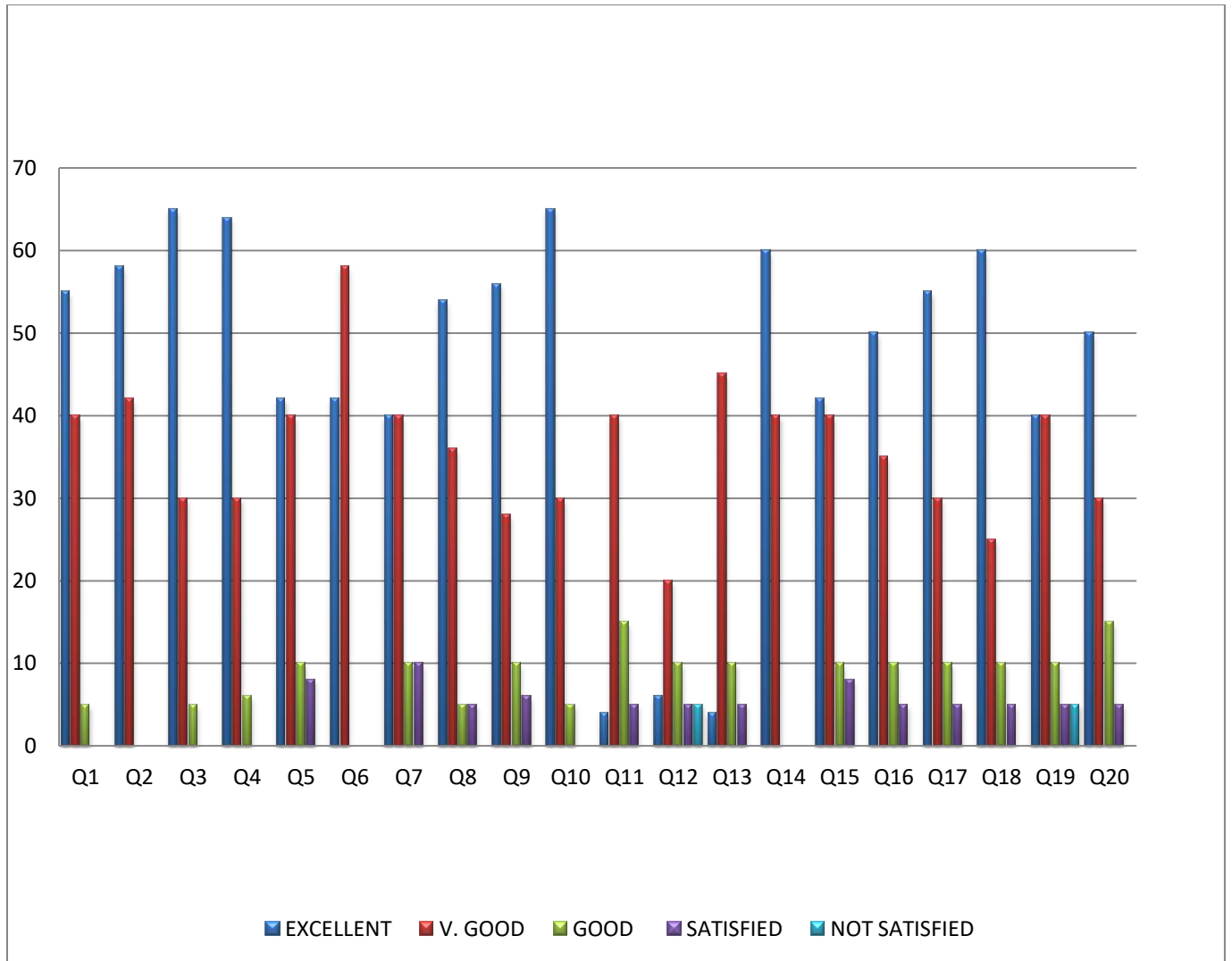
Name of the Department: Electrical and Electronics Engineering

Qn. No.	Question	Excel.	V. Good	Good	Satis.	Not Satis.
1	How do you rate the sequence of the courses that you have studied are in sequence to what you have studied in the previous semester?	55	40	5	0	0
2	How do you rate the syllabus of the courses that you have studied in relation to the competencies expected out of the course?	58	42	0	0	0
3	How do you rate the relevance of the units in syllabus relevant to the course?	65	30	5	0	0
4	How do you rate the sequence of the units in the course?	64	30	6	0	0
5	How do you rate the allocation of the credits to the courses?	42	40	10	8	0
6	How do you rate the distribution of the contact hours among the course components (L-T-P)?	42	58	0	0	0
7	How do you rate the offering of the electives in terms of their relevance to the specialization streams?	40	40	10	10	0
8	How do you rate the electives offered in relation to the Technological advancements?	54	36	5	5	0
9	How do you rate the relevance of the text books and reference books by their international recognition to the courses?	56	28	10	6	0
10	Rate the size of syllabus in terms of the load on the student	65	30	5	0	0
11	Rate the courses in terms of extra learning or self-learning considering the design of the courses	40	40	15	5	0
12	Rate the courses in terms of sequence of offering considering whether the preceding courses have been covered.	60	20	10	5	5
13	How do you rate the loading of the courses in a semester?	40	45	10	5	0
14	How do you rate the evaluation scheme designed for each of the course?	60	40	0	0	0
15	How do you rate the objectives stated for each of the course?	42	40	10	8	0
16	How do you rate competencies expected out of the course?	50	35	10	5	0
17	How do you rate the composition of the courses in terms of basic science, engineering science, humanities, discipline core, discipline elective, open elective, project etc.?	55	30	10	5	0
18	How do you rate the percentage of courses having lab components?	60	25	10	5	0
19	How do you rate the domain used for designing the experiments for the lab components?	40	40	10	5	5
20	How do you rate the experiments in relation to the real-life Applications?	50	30	15	5	0



PRINCIPAL
 PSN COLLEGE OF ENGINEERING & TECHNOLOGY
 MELATHEDIYOOR, PILLAYARNOOTTAI TALUK,
 TIRUNELVELI DIST. - 627 152.

Electrical and Electronics Engineering



PSN College of Engineering and Technology (Autonomous)



Melathediyoor, Tirunelveli - 627 152, Tamilnadu
 Approved by AICTE and Affiliated to Anna University
 Accredited by NAAC and Recognised by UGC under section 2(f) and 12(B)
 An ISO 9001 : 2015 Certified Institution



Website: www.psnacet.ac.in
 Phone: 04634 279009, 04634 279680.

E-Mail: principal@psnacet.ac.in

Feed Back Analysis Report

(Data provided are in percentage)

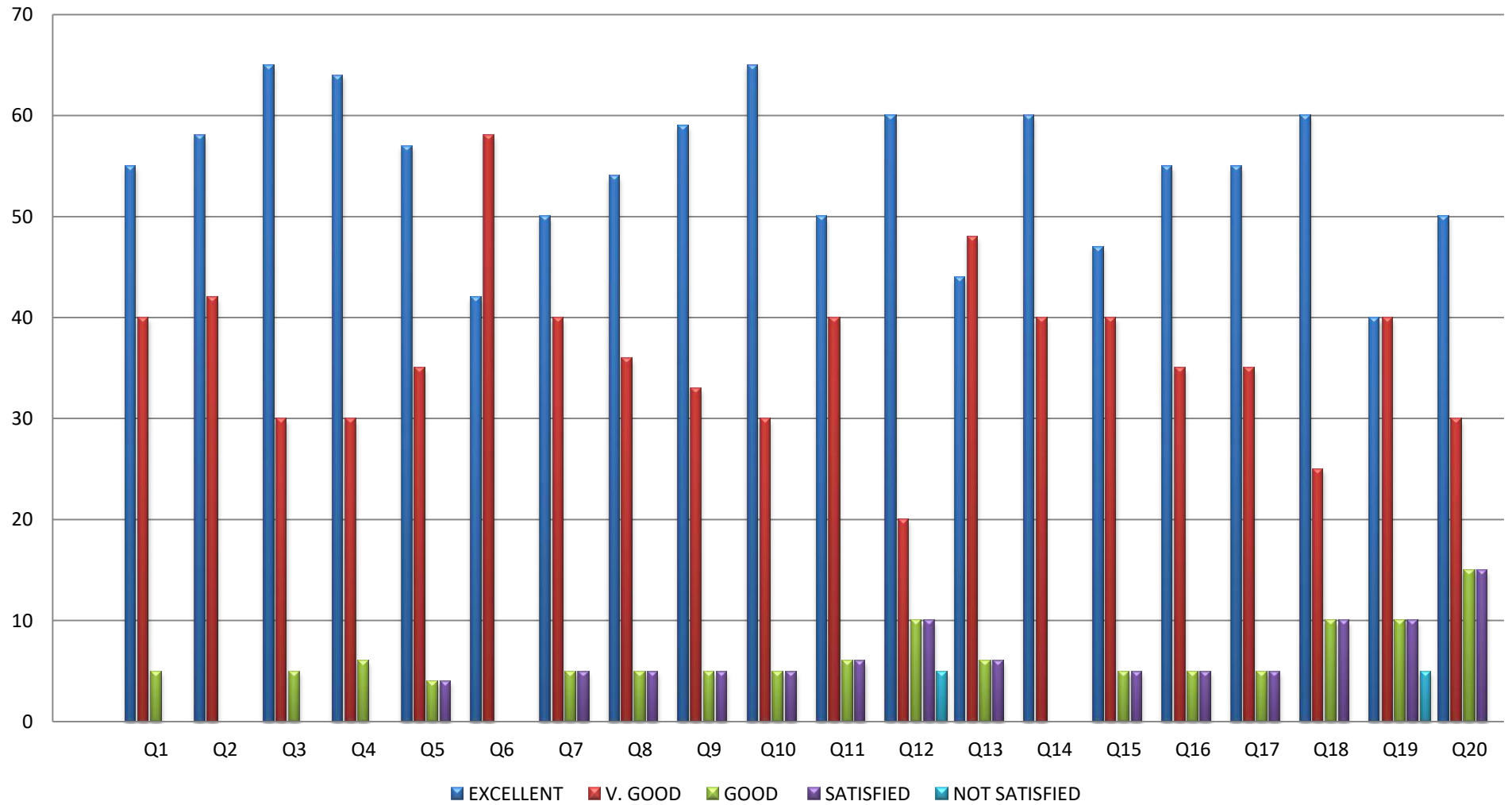
Name of the Department: Electronics and Instrumentation Engineering

Qn. No.	Question	Excel.	V. Good	Good	Satis.	Not Satis.
1	How do you rate the sequence of the courses that you have studied are in sequence to what you have studied in the previous semester?	55	40	5	0	0
2	How do you rate the syllabus of the courses that you have studied in relation to the competencies expected out of the course?	58	42	0	0	0
3	How do you rate the relevance of the units in syllabus relevant to the course?	65	30	5	0	0
4	How do you rate the sequence of the units in the course?	64	30	6	0	0
5	How do you rate the allocation of the credits to the courses?	57	35	4	4	0
6	How do you rate the distribution of the contact hours among the course components (L-T-P)?	42	58	0	0	0
7	How do you rate the offering of the electives in terms of their relevance to the specialization streams?	50	40	5	5	0
8	How do you rate the electives offered in relation to the Technological advancements?	54	36	5	5	0
9	How do you rate the relevance of the text books and reference books by their international recognition to the courses?	59	33	5	3	0
10	Rate the size of syllabus in terms of the load on the student	65	30	5	0	0
11	Rate the courses in terms of extra learning or self-learning considering the design of the courses	50	40	6	4	0
12	Rate the courses in terms of sequence of offering considering whether the preceding courses have been covered.	60	20	10	5	5
13	How do you rate the loading of the courses in a semester?	44	48	6	2	0
14	How do you rate the evaluation scheme designed for each of the course?	60	40	0	0	0
15	How do you rate the objectives stated for each of the course?	47	40	5	4	0
16	How do you rate competencies expected out of the course?	55	35	5	5	0
17	How do you rate the composition of the courses in terms of basic science, engineering science, humanities, discipline core, discipline elective, open elective, project etc.?	55	35	5	5	0
18	How do you rate the percentage of courses having lab components?	60	25	10	5	0
19	How do you rate the domain used for designing the experiments for the lab components?	40	40	10	5	5
20	How do you rate the experiments in relation to the real-life Applications?	50	30	15	5	0



PRINCIPAL
 PSN COLLEGE OF ENGINEERING & TECHNOLOGY
 MELATHEDIYOOR, PULAKKATTAI TALUK
 TIRUNELVELI DIST. - 627 152.

ELECTRONICS AND INSTRUMENTATION ENGINEERING



PSN College of Engineering and Technology (Autonomous)



Melathediyoor, Tirunelveli - 627 152, Tamilnadu
 Approved by AICTE and Affiliated to Anna University
 Accredited by NAAC and Recognised by UGC under section 2(f) and 12(B)
 An ISO 9001 : 2015 Certified Institution



Website: www.psnacet.ac.in
 Phone: 04634 279009, 04634 279680.

E-Mail: principal@psnacet.ac.in

Feed Back Analysis Report

(Data provided are in percentage)

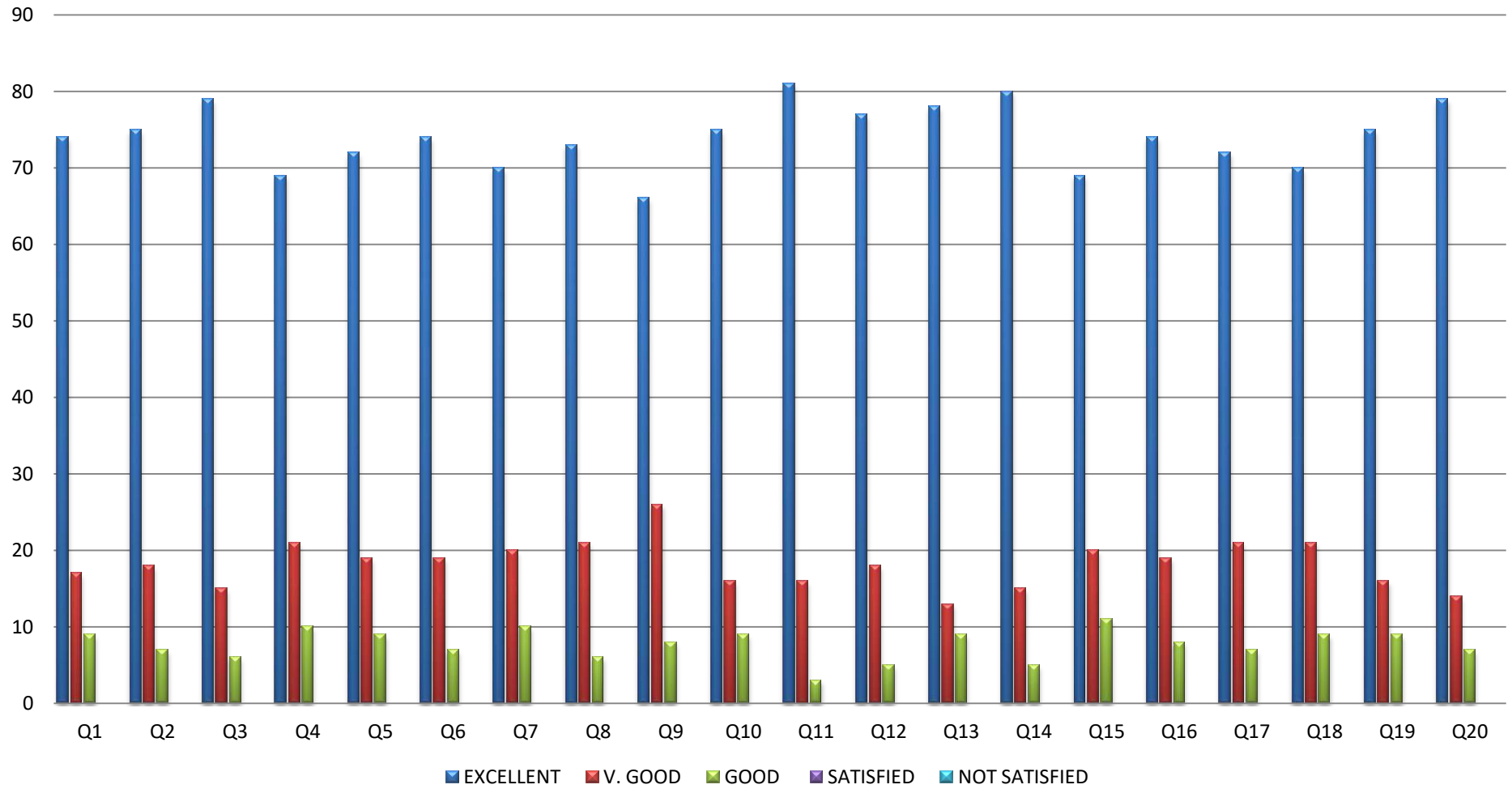
Name of the Department: Marine Engineering

Qn. No.	Question	Excel.	V. Good	Good	Satis.	Not Satis.
1	How do you rate the sequence of the courses that you have studied are in sequence to what you have studied in the previous semester?	74	17	9	0	0
2	How do you rate the syllabus of the courses that you have studied in relation to the competencies expected out of the course?	75	18	7	0	0
3	How do you rate the relevance of the units in syllabus relevant to the course?	79	15	6	0	0
4	How do you rate the sequence of the units in the course?	69	21	10	0	0
5	How do you rate the allocation of the credits to the courses?	72	19	9	0	0
6	How do you rate the distribution of the contact hours among the course components (L-T-P)?	74	19	7	0	0
7	How do you rate the offering of the electives in terms of their relevance to the specialization streams?	70	20	10	0	0
8	How do you rate the electives offered in relation to the Technological advancements?	73	21	6	0	0
9	How do you rate the relevance of the text books and reference books by their international recognition to the courses?	66	26	8	0	0
10	Rate the size of syllabus in terms of the load on the student	75	16	9	0	0
11	Rate the courses in terms of extra learning or self-learning considering the design of the courses	81	16	3	0	0
12	Rate the courses in terms of sequence of offering considering whether the preceding courses have been covered.	77	18	5	0	0
13	How do you rate the loading of the courses in a semester?	78	13	9	0	0
14	How do you rate the evaluation scheme designed for each of the course?	80	15	5	0	0
15	How do you rate the objectives stated for each of the course?	69	20	11	0	0
16	How do you rate competencies expected out of the course?	74	19	8	0	0
17	How do you rate the composition of the courses in terms of basic science, engineering science, humanities, discipline core, discipline elective, open elective, project etc.?	72	21	7	0	0
18	How do you rate the percentage of courses having lab components?	70	21	9	0	0
19	How do you rate the domain used for designing the components for the lab components?	75	16	9	0	0
20	How do you rate the experiments in relation to the real life applications?	79	14	7	0	0



PRINCIPAL
 PSN COLLEGE OF ENGINEERING & TECHNOLOGY
 MELATHEDIYOOR, PALAYAMNATTAL TALUK
 TIRUNELVELI DIST. - 627 152

MARINE ENGINEERING



PSN College of Engineering and Technology (Autonomous)



Melathediyoor, Tirunelveli - 627 152, Tamilnadu
 Approved by AICTE and Affiliated to Anna University
 Accredited by NAAC and Recognised by UGC under section 2(f) and 12(B)
 An ISO 9001 : 2015 Certified Institution



Website: www.psncoet.ac.in
 Phone: 04634 279009, 04634 279680.

E-Mail: principal@psncoet.ac.in

Feed Back Analysis Report

(Data provided are in percentage)

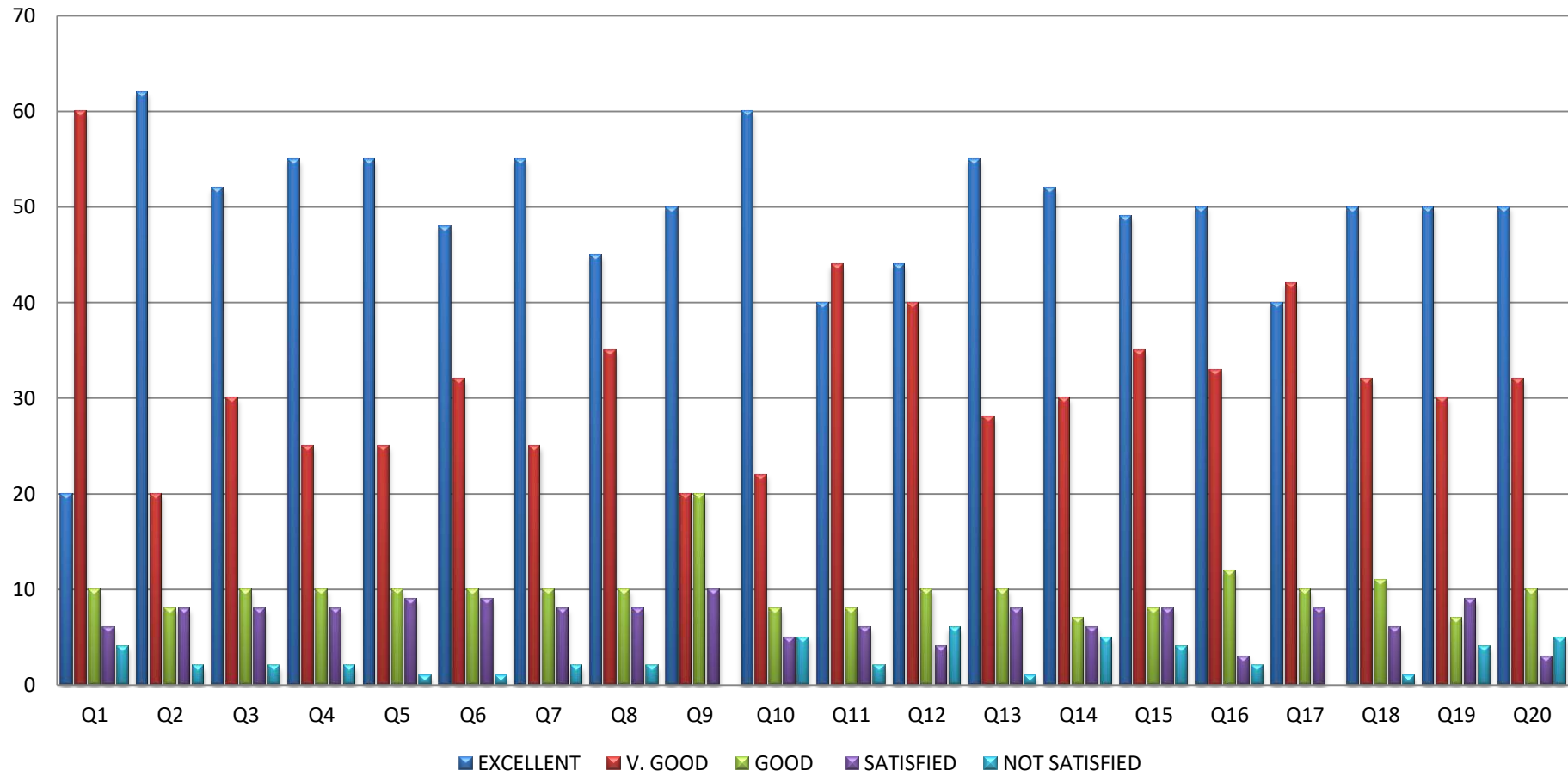
Name of the Department: Mechanical and Automation Engineering

Qn. No.	Question	Excel.	V. Good	Good	Satis.	Not Satis.
1	How do you rate the sequence of the courses that you have studied are in sequence to what you have studied in the previous semester?	20	60	10	6	4
2	How do you rate the syllabus of the courses that you have studied in relation to the competencies expected out of the course?	62	20	8	8	2
3	How do you rate the relevance of the units in syllabus relevant to the course?	52	30	10	8	2
4	How do you rate the sequence of the units in the course?	55	25	10	8	2
5	How do you rate the allocation of the credits to the courses?	55	25	10	9	1
6	How do you rate the distribution of the contact hours among the course components (L-T-P)?	48	32	10	9	1
7	How do you rate the offering of the electives in terms of their relevance to the specialization streams?	55	25	10	8	2
8	How do you rate the electives offered in relation to the Technological advancements?	45	35	10	8	2
9	How do you rate the relevance of the text books and reference books by their international recognition to the courses?	50	20	20	10	0
10	Rate the size of syllabus in terms of the load on the student	60	22	8	5	5
11	Rate the courses in terms of extra learning or self-learning considering the design of the courses	40	44	8	6	2
12	Rate the courses in terms of sequence of offering considering whether the preceding courses have been covered.	44	40	10	4	6
13	How do you rate the loading of the courses in a semester?	55	28	10	8	1
14	How do you rate the evaluation scheme designed for each of the course?	52	30	7	6	5
15	How do you rate the objectives stated for each of the course?	49	35	8	8	4
16	How do you rate competencies expected out of the course?	50	33	12	3	2
17	How do you rate the composition of the courses in terms of basic science, engineering science, humanities, discipline core, discipline elective, open elective, project etc.?	40	42	10	8	0
18	How do you rate the percentage of courses having lab components?	50	32	11	6	1
19	How do you rate the domain used for designing the experiments for the lab components?	50	30	7	9	4
20	How do you rate the experiments in relation to the real life applications?	50	82	10	3	5



PRINCIPAL
 PSN COLLEGE OF ENGINEERING & TECHNOLOGY
 MELATHEDIYOOR, PALAYAKHOTTA TALUK
 TIRUNELVELI DIST. - 627 152.

MECHANICAL AND AUTOMATION ENGINEERING



PSN College of Engineering and Technology (Autonomous)



Melathediyoor, Tirunelveli - 627 152, Tamilnadu
 Approved by AICTE and Affiliated to Anna University
 Accredited by NAAC and Recognised by UGC under section 2(f) and 12(B)
 An ISO 9001 : 2015 Certified Institution



Website: www.psnacet.ac.in
 Phone: 04634 279009, 04634 279680.

E-Mail: principal@psnacet.ac.in

Feed Back Analysis Report

(Data provided are in percentage)

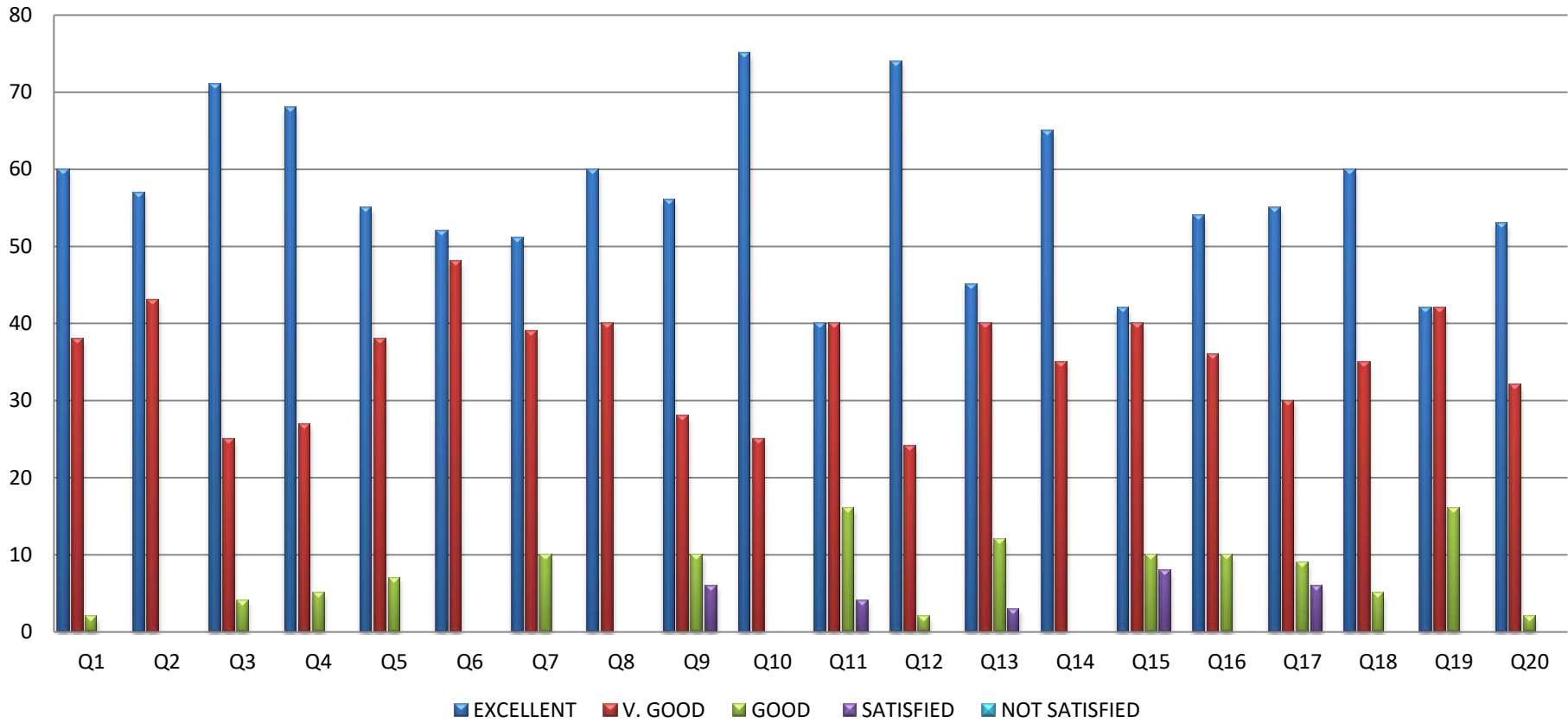
Name of the Department: Mechanical Engineering

Qn. No.	Question	Excel.	V. Good	Good	Satis.	Not Satis.
1	How do you rate the sequence of the courses that you have studied are in sequence to what you have studied in the previous semester?	60	38	2	0	0
2	How do you rate the syllabus of the courses that you have studied in relation to the competencies expected out of the course?	57	43	0	0	0
3	How do you rate the relevance of the units in syllabus relevant to the course?	71	25	4	0	0
4	How do you rate the sequence of the units in the course?	68	27	5	0	0
5	How do you rate the allocation of the credits to the courses?	55	38	7	0	0
6	How do you rate the distribution of the contact hours among the course components (L.T.P)?	52	48	0	0	0
7	How do you rate the offering of the electives in terms of their relevance to the specialization streams?	51	39	10	0	0
8	How do you rate the electives offered in relation to the Technological advancements?	60	40	0	0	0
9	How do you rate the relevance of the text books and reference books by their international recognition to the courses?	56	28	10	6	0
10	Rate the size of syllabus in terms of the load on the student	75	25	0	0	0
11	Rate the courses in terms of extra learning or self-learning considering the design of the courses	40	40	16	4	0
12	Rate the courses in terms of sequence of offering considering whether the preceding courses have been covered.	74	24	2	0	0
13	How do you rate the loading of the courses in a semester?	45	40	12	3	0
14	How do you rate the evaluation scheme designed for each of the course?	65	35	0	0	0
15	How do you rate the objectives stated for each of the course?	42	40	10	8	0
16	How do you rate competencies expected out of the course?	54	36	10	0	0
17	How do you rate the composition of the courses in terms of basic science, engineering science, humanities, discipline core, discipline elective, open elective, project etc?	55	30	9	6	0
18	How do you rate the percentage of courses having lab components?	60	35	5	0	0
19	How do you rate the domain used for designing the experiments for the lab components?	42	42	16	0	0
20	How do you rate the experiments in relation to the real life Applications?	53	32	2	0	0



PRINCIPAL
 PSN COLLEGE OF ENGINEERING & TECHNOLOGY
 MELATHEDIYOOR, PALAYAMKOTTAI TALUK
 TIRUNELVELI DIST. - 627 152.

MECHANICAL ENGINEERING



PSN College of Engineering and Technology (Autonomous)



Melathediyoor, Tirunelveli - 627 152, Tamilnadu
 Approved by AICTE and Affiliated to Anna University
 Accredited by NAAC and Recognised by UGC under section 2(f) and 12(B)
 An ISO 9001 : 2015 Certified Institution



Website: www.psnacet.ac.in
 Phone: 04634 279009, 04634 279680.

E-Mail: principal@psnacet.ac.in

Feed Back Analysis Report

(Data provided are in percentage)

Name of the Department: Business Administration

Qa. No.	Question	Excel.	V. Good	Good	Satis.	Not Satic.
1	How do you rate the sequence of the courses that you have studied are in sequence to what you have studied in the previous semester?	10	50	20	14	6
2	How do you rate the syllabus of the courses that you have studied in relation to the competencies expected out of the course?	58	27	10	5	0
3	How do you rate the relevance of the units in syllabus relevant to the course?	35	38	17	8	2
4	How do you rate the sequence of the units in the course?	32	29	28	11	10
5	How do you rate the allocation of the credits to the courses?	35	32	20	8	5
6	How do you rate the distribution of the contact hours among the course components (L-T-P)?	40	35	17	7	1
7	How do you rate the offering of the electives in terms of their relevance to the specialization streams?	40	35	11	9	5
8	How do you rate the electives offered in relation to the Technological advancements?	50	22	17	7	4
9	How do you rate the relevance of the text books and reference books by their international recognition to the courses?	39	19	28	10	4
10	Rate the size of syllabus in terms of the load on the student	53	21	16	8	2
11	Rate the courses in terms of extra learning or self-learning considering the design of the courses	25	36	21	11	7
12	Rate the courses in terms of sequence of offering considering whether the preceding courses have been covered.	32	44	11	8	5
13	How do you rate the loading of the courses in a semester?	52	30	11	6	1
14	How do you rate the evaluation scheme designed for each of the course?	38	35	17	7	3
15	How do you rate the objectives stated for each of the course?	44	11	28	11	6
16	How do you rate competencies expected out of the course?	33	30	19	11	7
17	How do you rate the composition of the courses in terms of basic science, engineering science, humanities, discipline core, discipline elective, open elective, project etc?	31	39	24	5	1
18	How do you rate the percentage of courses having lab components?	54	24	17	6	2
19	How do you rate the domains used for designing the experiments for the lab components?	41	23	22	10	4
20	How do you rate the experiments in relation to their applications?	40	39	13	5	3



PSN COLLEGE OF ENGINEERING & TECHNOLOGY
 MELATHEDIYOOR, PALAYAMKOTTA TALUK
 TIRUNELVELI DIST. - 627 152

MASTER OF BUSINESS ADMINISTRATION

